

WAAS CH 97307 W13A	APP CRS 134°	Rwy Idg TDZE Apt Elev	8599 4497 4497
--	------------------------	-----------------------------	---

RNAV (GPS) RWY 13

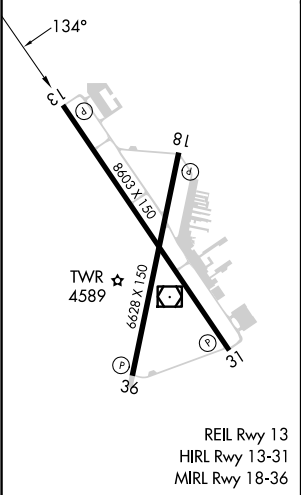
PROVO MUNI (PVU)

RNP APCH - GPS.	MISSED APPROACH: Climb to 9000 direct HUNSU and on track 191° to FEBGO and on track 217° to ZARAK and on track 299° to JAMUK and on track 358° to FFU VORTAC and hold. *Missed approach requires minimum climb of 215 feet per NM to 7760.
▼ Rwy 13 helicopter visibility reduction below ¾ SM NA. Circling Rwy 18, 36 NA at night. For uncompensated Baro-VNAV systems, LNAV/VNAV NA below -23°C or above 54°C. When local altimeter setting not received, procedure NA. Circling NA east of Rwy 18 and 31.	

ATIS 135.175	SALT LAKE CITY APP CON 118.85 233.7	PROVO TOWER* 125.3 (CTAF)	GND CON 119.4
------------------------	---	-------------------------------------	-------------------------



ELEV 4497	D	TDZE 4497
-----------	----------	-----------



	9000	HUNSU	tr 191°	FEBGO	tr 217°	ZARAK	tr 299°	JAMUK	tr 358°	FFU
DICOT	8000									
	134°									
	GP 3.00°									
	TCH 50									
	3.8 NM		2.2 NM		3.7 NM		1.9 NM			
CATEGORY	A	B	C	D						
LPV DA*	4756-¾ 259 (300-¾)									
LNAV/VNAV DA*	4838-1 341 (400-1)									
LPV DA	4925-1¼ 428 (500-1¼)									
LNAV/VNAV DA	4981-1⅝ 484 (500-1⅝)									
LNAV MDA	5140-1 643 (700-1)		5140-1⅞ 643 (700-1⅞)							
C CIRCLING	5140-1 643 (700-1)		5160-1⅞ 663 (700-1⅞)		5280-2½ 783 (800-2½)					