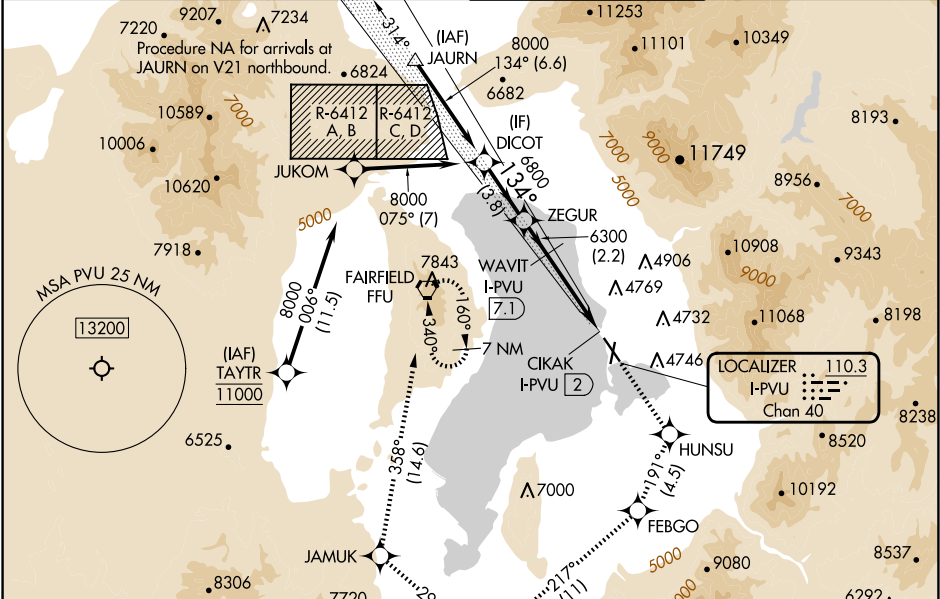


LOC/DME I-PVU <b>110.3</b> Chan <b>40</b>	APP CRS <b>134°</b>	Rwy Idg <b>8599</b> TDZE <b>4497</b> Apt Elev <b>4497</b>
---	------------------------	---

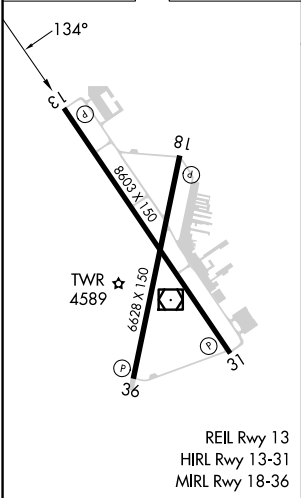
ILS or LOC RWY 13  
PROVO MUNI (PVU)

RNP APCH - GPS. ▼ Rwy 13 helicopter visibility reduction below ¾ SM NA. ▲ Circling Rwy 18, 36 NA at night. When local altimeter setting not received, procedure NA. Circling NA east of Rwys 18 and 31.	MISSED APPROACH: Climb to 9000 direct HUNSU and on track 191° to FEBGO and on track 217° to ZARAK and on track 299° to JAMUK and on track 358° to FFU VORTAC and hold. *Missed approach requires minimum climb of 215 feet per NM to 7760.
---	--

ATIS <b>135.175</b>	SALT LAKE CITY APP CON <b>118.85 233.7</b>	PROVO TOWER* <b>125.3 (CTAF)</b>	GND CON <b>119.4</b>
------------------------	---	-------------------------------------	-------------------------



ELEV 4497	<b>D</b>	TDZE 4497
-----------	----------	-----------



DICOT	9000 HUNSU	FEBGO	ZARAK	JAMUK	FFU
	↑	tr 191°	tr 217°	tr 299°	tr 358°
		ZEGUR	WAVIT I-PVU [7.1]	I-PVU [2.9]	CIKAK I-PVU [2]
	8000	6800	6300	6300	
		GP 3.00° TCH 50			
		3.8 NM	2.2 NM	4.2 NM	0.9 NM 0.5
CATEGORY	A	B	C	D	
S-ILS 13*	4756-¾ 259 (300-¾)				
S-ILS 13	4925-1¼ 428 (500-1¼)				
S-LOC 13	4980-1 483 (500-1)		4980-1¾ 483 (500-1¾)		
☐ CIRCLING	4980-1 483 (500-1)		5160-1¾ 663 (700-1¾)		5280-2½ 783 (800-2½)