

DITTI ONE DEPARTURE (RNAV)

AL-683 (FAA)

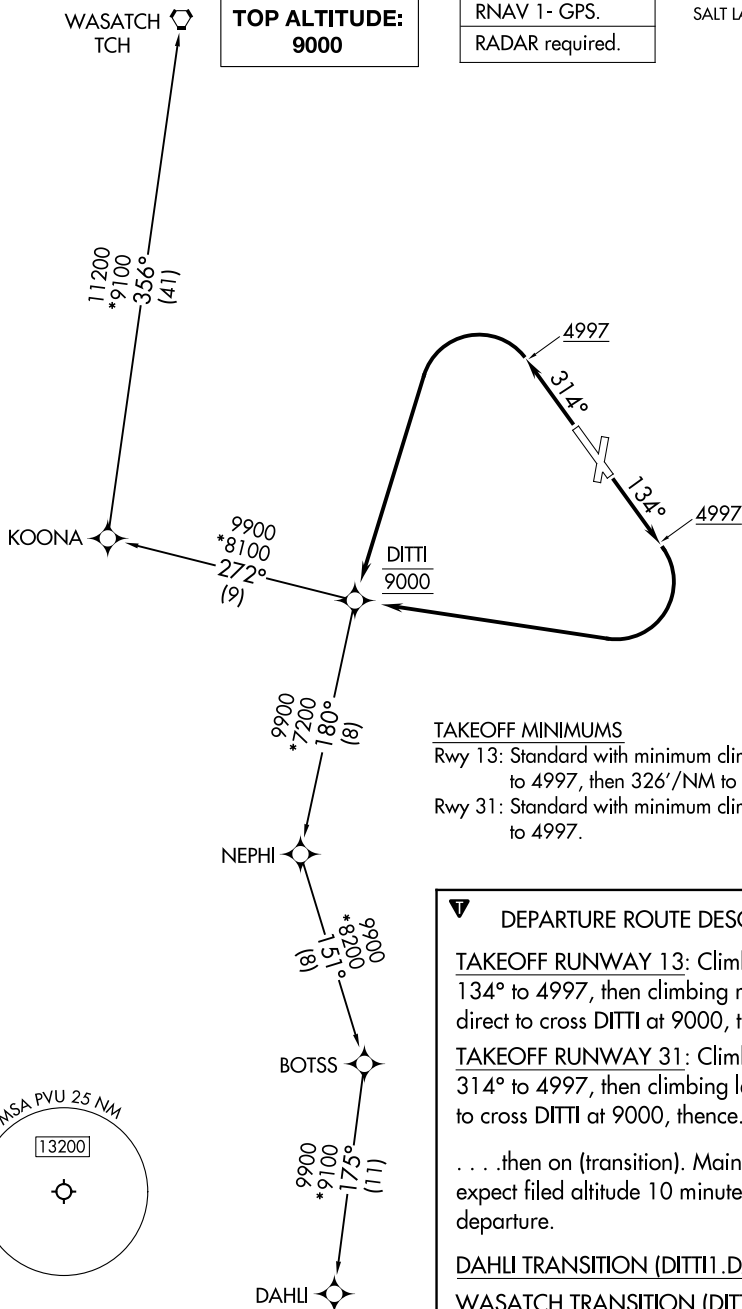
PROVO MUNI (PVU)
PROVO, UTAH

SALT LAKE CITY DEP CON
118.85 233.7
ATIS
135.175
GND CON
119.4
PROVO TOWER ★
125.3 (CTAF)

TOP ALTITUDE:
9000

RNAV 1- GPS.

RADAR required.



TAKEOFF MINIMUMS

Rwy 13: Standard with minimum climb of 500'/NM to 4997, then 326'/NM to 7600.

Rwy 31: Standard with minimum climb of 500'/NM to 4997.

DEPARTURE ROUTE DESCRIPTION

TAKEOFF RUNWAY 13: Climb on heading 134° to 4997, then climbing right turn direct to cross DITTI at 9000, thence. . .

TAKEOFF RUNWAY 31: Climb on heading 314° to 4997, then climbing left turn direct to cross DITTI at 9000, thence. . . .

...then on (transition). Maintain 9000, expect filed altitude 10 minutes after departure.

DAHLI TRANSITION (DITI1.DAHLI)

WASATCH TRANSITION (DITT1.TCH)

NOTE: Chart not to scale.

DITTI ONE DEPARTURE (RNAV)

(DITTI1.DITTI) 26DEC24

PROVO, UTAH
PROVO MUNI (PVU)

SW-4, 10 JUL 2025 to 07 AUG 2025