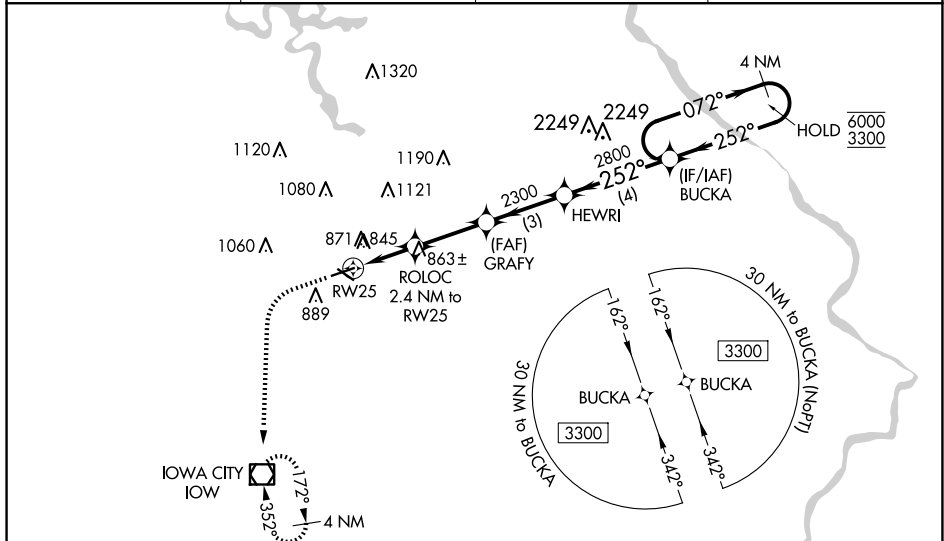


WAAS CH <b>58207</b> <b>W25A</b>	APP CRS <b>252°</b>	Rwy Idg <b>4872</b> TDZE <b>659</b> Apt Elev <b>684</b>
--	------------------------	---

RNAV (GPS) RWY 25  
IOWA CITY MUNI (IOW)

<p><b>RNP APCH - GPS.</b></p>	
<p><b>▼</b> Rwy 25 helicopter visibility reduction below <math>\frac{3}{4}</math> SM NA. For uncompensated Baro-VNAV systems, LNAV/VNAV NA below -22°C or above 54°C. Circling Rwy 12, 30 NA at night. Baro-VNAV and VDP NA when using CID altimeter setting. When local altimeter setting not received, use CID altimeter setting: increase LPV DA to 970 feet and all visibilities <math>\frac{1}{2}</math> SM; increase LNAV/VNAV DA to 1209 feet and all visibilities <math>\frac{1}{4}</math> SM; increase all MDAs 80 feet and LNAV visibility Cats C/D <math>\frac{3}{4}</math> SM, and Circling visibility Cat C/D <math>\frac{1}{4}</math> SM.</p>	<p><b>MISSED APPROACH:</b> Climb to 1200 then climbing left turn to 2600 direct IOW VOR/DME and hold, continue climb-in-hold to 2600.</p>

ASOS <b>128.075</b>	CEDAR RAPIDS APP CON ★ <b>119.7 266.8</b>	CLNC DEL <b>119.05</b>	UNICOM <b>122.8</b> (CTAF) <b>0</b>
------------------------	--	---------------------------	--



ELEV 684	<b>D</b>	TDZE 659
----------	----------	----------

