

VOR/DME CMA
115.8
Chan **105**

APP CRS
247°

Rwy Idg
TDZE **77**
Apt Elev **77**

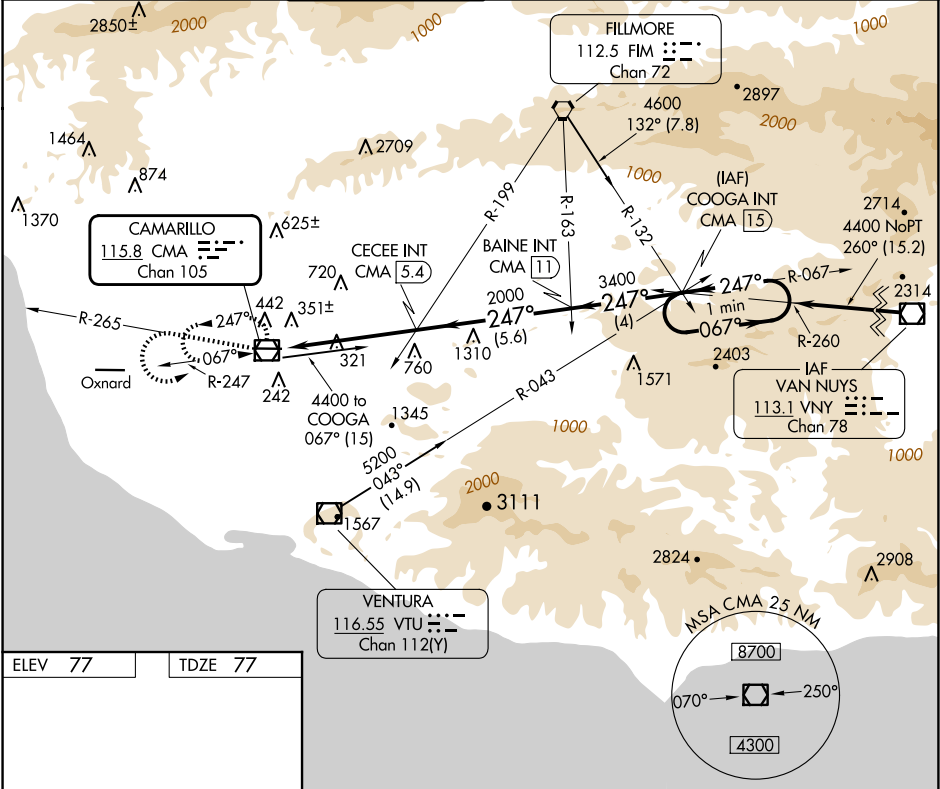
VOR RWY 26

CAMARILLO (CMA)

Circling not authorized north of Rwy 8/26.

MISSED APPROACH: Climb to 2000 via CMA R-265 then climbing left turn to 4400 direct CMA VOR/DME and hold.

ATIS 126.025	POINT MUGU APP CON ★ 124.7 335.5	CAMARILLO TOWER ★ 128.2 (CTAF) 0 269.4	GND CON 121.8	CLNC DEL 121.8	POINT MUGU CLNC DEL 120.75 279.55	UNICOM 122.95
------------------------	--	--	-------------------------	--------------------------	---	-------------------------



ELEV 77

TDZE 77

6013 X 150

TWR

Ultralight Operating Area

247°

2000

4400

CMA

VGSI and descent angles not coincident (VGSI Angle 3.00°/TCH 48).

CMA R-265

CECEE INT CMA 5.4

Baine INT CMA 11

COOGA INT CMA 15

One Minute Holding Pattern

CMA 0.5

3.61°

TCH 48

2000

3400

4400

067°

247°

4.9 NM

5.6 NM

4 NM

MIRL Rwy 8-26

REIL Rwy 8 and 26

FAF to MAP 4.9 NM

Knots	60	90	120	150	180
Min:Sec	4:54	3:16	2:27	1:58	1:38

CIRCLING

CATEGORY	A	B	C	D
S-26	1100-1¼ 1023 (1100-1¼)	1100-1½ 1023 (1100-1½)	1100-3 1023 (1100-3)	NA
CIRCLING	1100-1¼ 1023 (1100-1¼)	1100-1½ 1023 (1100-1½)	1100-3 1023 (1100-3)	NA