

CAMARILLO, CALIFORNIA

AL-680 (FAA)

25107

WAAS CH <b>58202</b> <b>W26A</b>	APP CRS <b>257°</b>	Rwy Idg <b>6013</b> TDZE <b>77</b> Apt Elev <b>77</b>
--	------------------------	---

RNAV (GPS) Z RWY 26  
CAMARILLO (CMA)

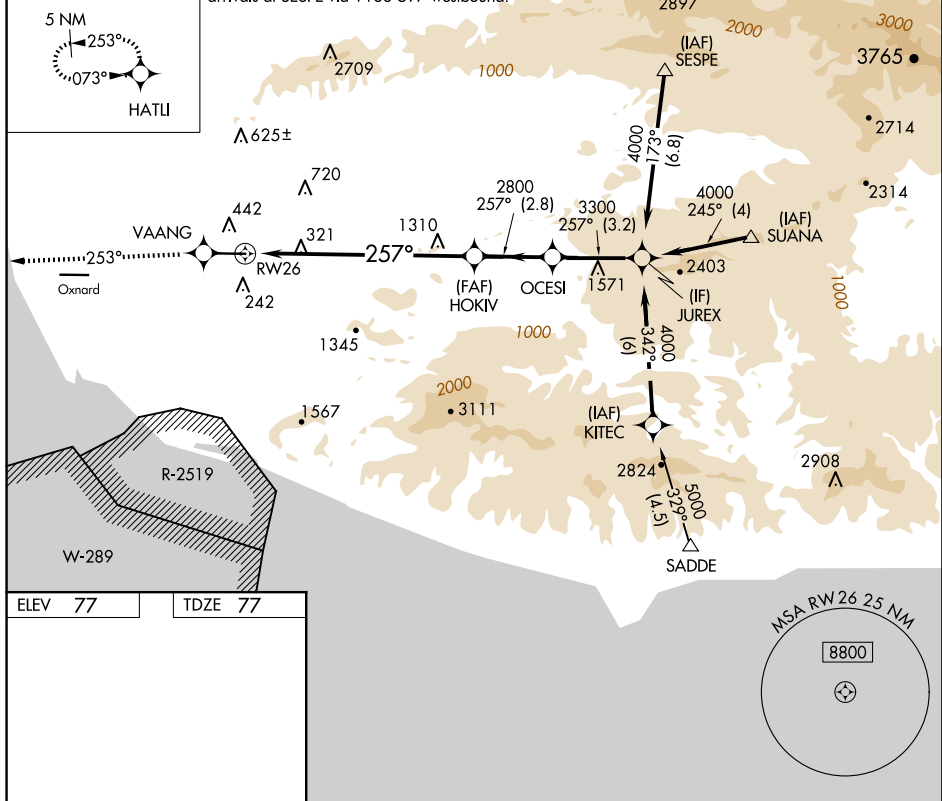
<b>T</b>	DME/DME RNP -0.3 NA.
<b>A</b> NA	If local altimeter setting not received, use Oxnard altimeter setting and increase DA 18 feet.
<b>W</b>	

**MISSED APPROACH:** Climb to 3000 direct VAANG and via 253° track to HATLI and hold.

ATIS <b>126.025</b>	POINT MUGU APP CON ★ <b>124.7 335.5</b>	CAMARILLO TOWER ★ <b>128.2 (CTAF) 0 269.4</b>	GND CON <b>121.8</b>	CLNC DEL <b>121.8</b>	POINT MUGU CLNC DEL <b>120.75 279.55</b>	UNICOM <b>122.95</b>
------------------------	--	--	-------------------------	--------------------------	---	-------------------------

MISSED APCH FIX

Procedure NA for arrivals at SUANA via V326 eastbound and arrivals at SESPE via V186-597 westbound.



CAMARILLO, CALIFORNIA  
Orig-A 27JUN13

34°13'N-119°06'W

CAMARILLO (CMA)  
RNAV (GPS) Z RWY 26

SW-3, 10 JUL 2025 to 07 AUG 2025