

APP CRS	Rwy Idg	6013
252°	TDZE	77
	Apt Elev	77

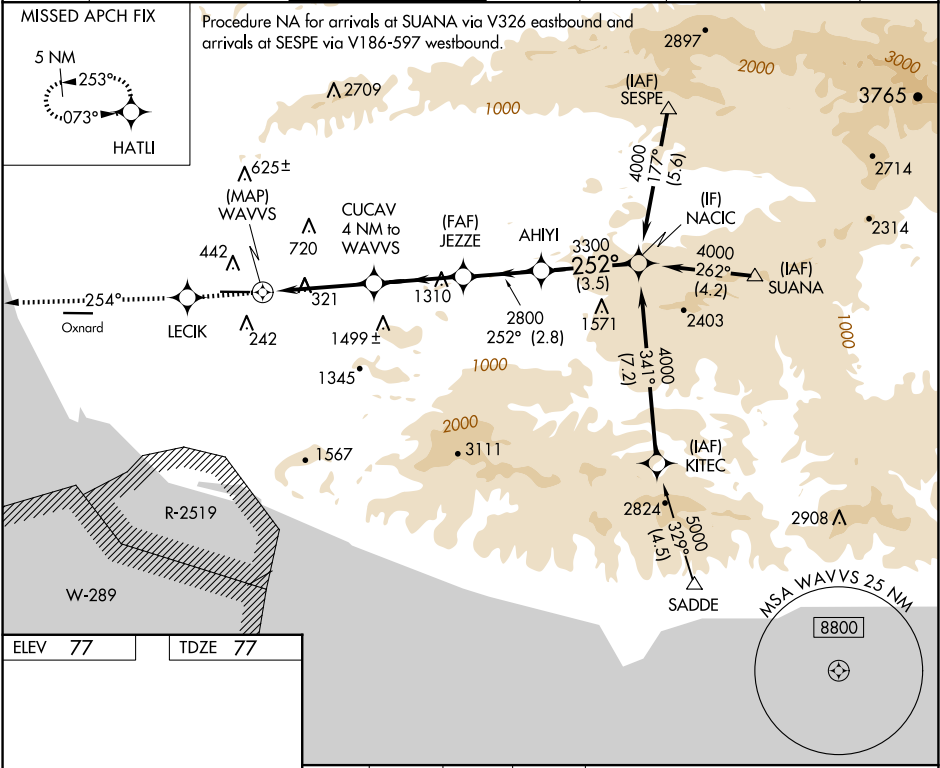
RNAV (GPS) Y RWY 26
CAMARILLO (CMA)

⚠ Circling NA north of Rwy 8-26. DME/DME RNP-0.3 NA.

⚠ If local altimeter setting not received, use Oxnard altimeter setting and increase all MDAs 20 feet. VDP NA when using Oxnard altimeter setting.

MISSED APPROACH: Climb to 3000 direct LECIK and via 254° track to HATU and hold.

ATIS 126.025	POINT MUGU APP CON ★ 124.7 335.5	CAMARILLO TOWER ★ 128.2 (CTAF) 0 269.4	GND CON 121.8	CLNC DEL 121.8	POINT MUGU CLNC DEL 120.75 279.55	UNICOM 122.95
-----------------	-------------------------------------	---	------------------	-------------------	--------------------------------------	------------------



ELEV 77	TDZE 77
---------	---------

REIL Rwys 8 and 26 0

MIRL Rwy 8-26 0

3000	LECIK	HATU	VGSI and descent angles not coincident (VGSI Angle 3.00/TCH 48).
254° tr			
3000	252°	4000	
1.1 NM to WAVVS	CUCAV 4 NM to WAVVS	JEZZE	AHIMI
WAVVS	3.30° TCH 48	2800	3300
0.5	1.1	2.9 NM	3.2 NM
0.5	1.1	2.9 NM	3.2 NM
CATEGORY	A	B	C
LNAV MDA	620-1	543 (600-1)	620-1½ 543 (600-1½)
CIRCLING	620-1	543 (600-1)	640-1½ 563 (600-1½)