

RNAV (GPS) RWY 23

WAAS Chan 56203 W23A	APCH CRS 225°	Rwy Idg 10,926 TDZE 571 Arprt Elev 571
--	-------------------------	---

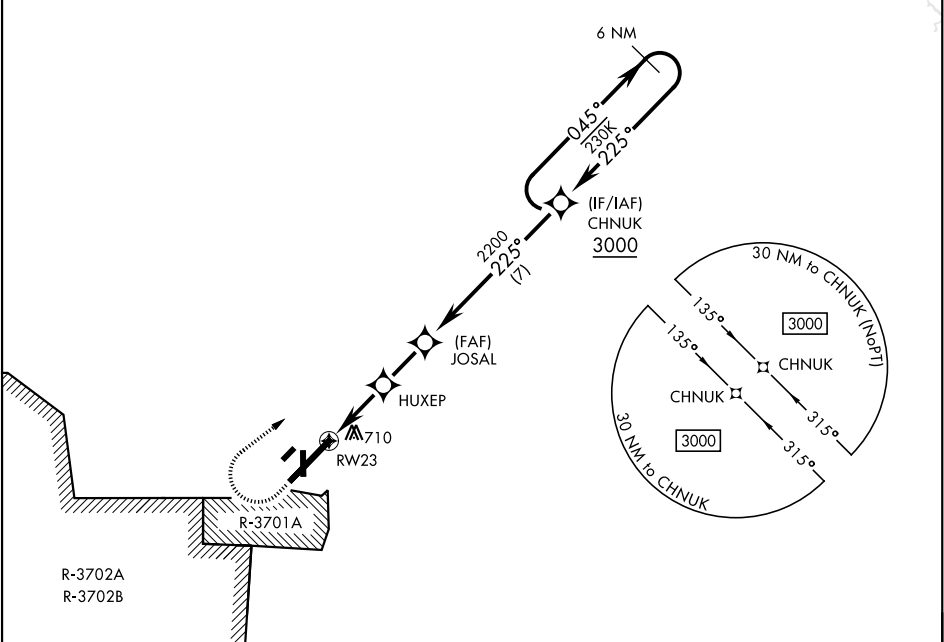
[USA]

CAMPBELL AAF (FORT CAMPBELL) (KHOP)

RNP APCH - GPS ▼ * When ALS inop, increase RVR to 40, vis to ¾ mile. ** When ALS inop, increase RVR to 55, vis to 1 mile. *** When ALS inop, increase CAT AB RVR to 55, vis to 1 mile, CAT CDE RVR to 60, vis to 1½ miles. **** Circling not authorized SE of Rwy 5-23.	SSALR A3	MISSED APPROACH: Climb to 1000 then climbing right turn to 3000 direct CHNUK and hold.
--	-------------	---

ATIS 125.175 308.4	APP CON 118.1 269.525	TOWER 120.9 278.8	GND CON 121.8 266.8	CLNC DEL 138.8	ASR/PAR
------------------------------	---------------------------------	-----------------------------	-------------------------------	--------------------------	---------

For uncompensated BARO-VNAV systems,
LNAV/VNAV NA below -19°C (-2°F) or
above 54°C (130°F).



1000	3000	CHNUK	ELEV 571					TDZE 571						
VGS1 and RNAV glidepath not coincident (VGS1 Angle 3.00/TCH 78).														
6 NM Holding Pattern CHNUK 045° 225° 3000 GP 3.00° TCH 57														
JXSAL HUXEP 1500 2200 2.8 NM 2.1 NM														
RW23														
CATEGORY														
LPV DA *														
LNAV/VNAV DA **														
LNAV MDA ***														
CIRCLING ****														
HIRL all rwys														

RNAV (GPS) RWY 23

SE-1, 10 JUL 2025 to 07 AUG 2025

SE-1, 10 JUL 2025 to 07 AUG 2025