
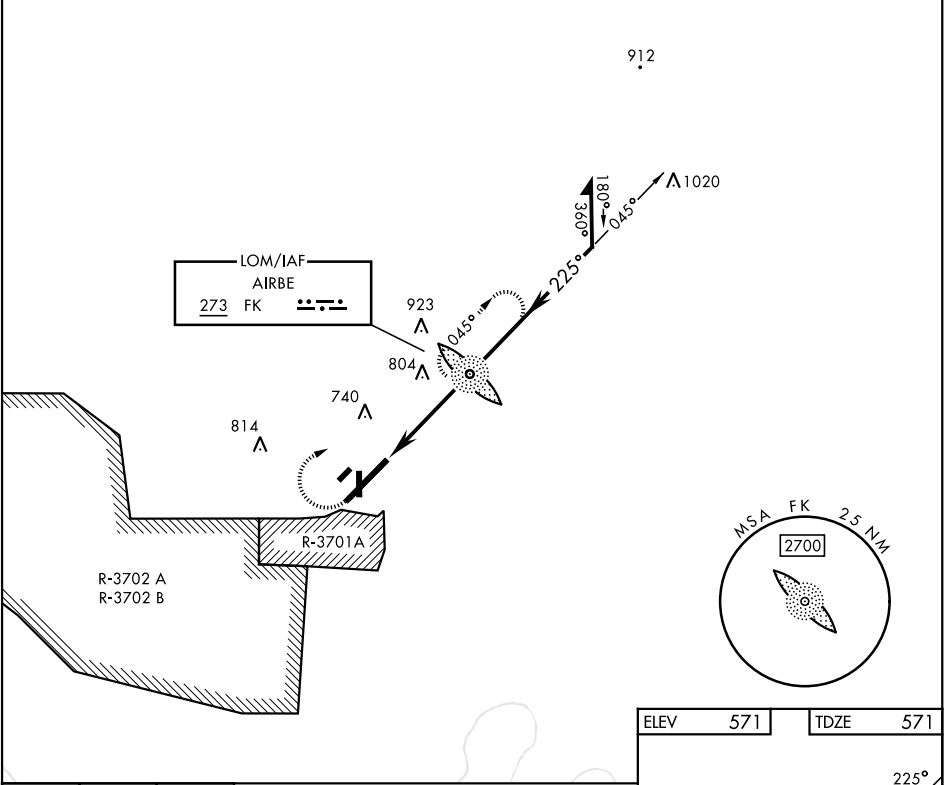
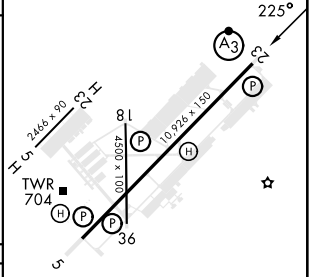


NDB RWY 23

NDB FK <b>273</b>	APCH CRS <b>225°</b>	Rwy Idg TDZE Arpt Elev <b>10,926</b> <b>571</b> <b>571</b>	[USA]	CAMPBELL AAF (FORT CAMPBELL) (KHOP)		
RADAR required			SSALR 	MISSED APPROACH: Climb to 1200, then climbing right turn to 2500 direct to FK LOM and continue climb-in-hold (max 230 KIAS).		
ATIS <b>125.175 308.4</b>	APP CON <b>118.1 269.525</b>	TOWER <b>120.9 278.8</b>	GND CON <b>121.8 266.8</b>	CLNC DEL <b>138.8</b>	ASR/PAR	



1200	2500	FK		
VGSi and descent angles not coincident.				
NDB LOM				
Remain within 10 NM				
2100				
4.4 NM				
CATEGORY	A	B	C	D
S-23*	1120/40	549 (600-¾)	1120/60	549 (600-½)
CIRCLING**	1120-1	549 (600-1)	1120-1½ 549 (600-1½)	1140-2 569 (600-2)

ELEV	571	TDZE	571
			
FAF to MAP 4.4 NM			
Knots	60	90	120 150 180
Min:Sec	4:24	2:56	2:12 1:46 1:28

NDB RWY 23

SE-1, 10 JUL 2025 to 07 AUG 2025

SE-1, 10 JUL 2025 to 07 AUG 2025