

ILS or LOC RWY 23

LOC/DME I-FKP <b>111.9</b> Chan <b>56</b>	APCH CRS <b>225°</b>	Rwy Idg <b>10,926</b> TDZE <b>571</b> Arpt Elev <b>571</b>
-------------------------------------------------	-------------------------	------------------------------------------------------------------

[USA]

CAMPBELL AAF (FORT CAMPBELL) (KHOP)

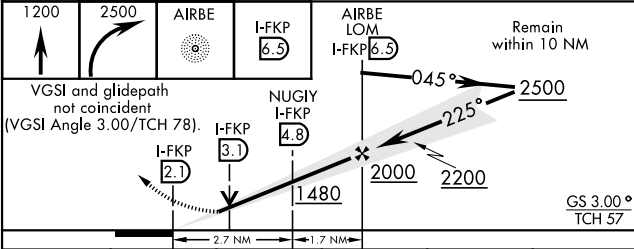
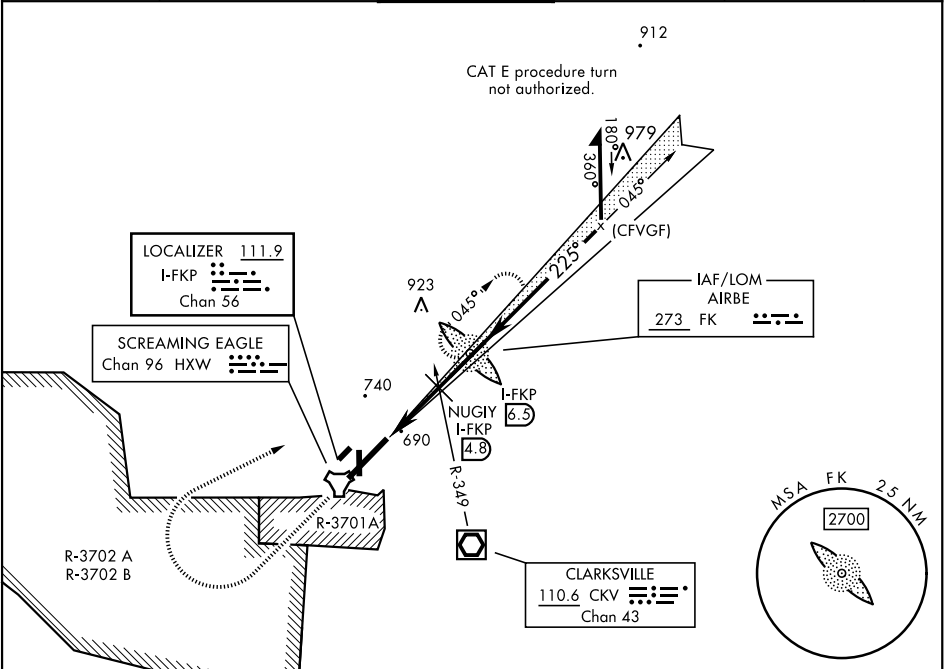
RADAR required

▼ \* When ALS inop, increase RVR to 40, vis to ¾ miles.  
\*\* When ALS inop, increase CAT AB RVR to 55, vis to 1 mile; CAT CDE RVR to 60, vis to 1½ miles.  
\*\*\* Circling not authorized SE of Rwy 5-23.

SSALR  
A3

MISSED APPROACH: Climb to 1200 then climbing right turn to 2500 direct AIRBE LOM/I-FKP 6.5 DME, continue climb-in-hold to 2500 (max 230 KIAS).

ATIS <b>125.175 308.4</b>	APP CON <b>118.1 269.525</b>	TOWER <b>120.9 278.8</b>	GND CON <b>121.8 266.8</b>	CLNC DEL <b>138.8</b>	ASR/PAR
------------------------------	---------------------------------	-----------------------------	-------------------------------	--------------------------	---------



CATEGORY	A	B	C	D	E
S-ILS 23 *	771/24		200	(200-½)	
S-LOC 23 **	960/24 389 (400-½)		960/35	389 (400-¾)	
*** CIRCLING	1060-1 489 (500-1)		1060-1½ 489 (500-1½)	1140-2 569 (600-2)	

ELEV 571 TDZE 571

HIRL all rwys

FAF to MAP 4.4 NM

Knots	60	90	120	150	180
Min:Sec	4:24	2:56	2:12	1:46	1:28

ILS or LOC RWY 23

SE-1, 10 JUL 2025 to 07 AUG 2025

SE-1, 10 JUL 2025 to 07 AUG 2025