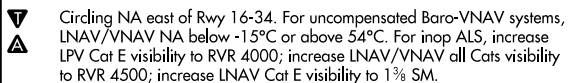


WAAS Ch 97323 W34A	APP CRS 345°	Rwy Idg 11321 TDZE 84 Apt Elev 100
--	------------------------	---

RNAV (GPS) RWY 34
PORTSMOUTH INTL AT PEASE (PSM)

RNP APCH - GPS.



MISSED APPROACH:
Climb to 3300 direct
ITAWA and hold, continue
climb-in-hold to 3300

ATIS 132.05 273.5	BOSTON APP CON 125.05 269.4	PORTSMOUTH TOWER 128.4 269.0	GND CON 120.95 275.8	CLNC DEL 335.8
----------------------	--------------------------------	---------------------------------	-------------------------	-------------------

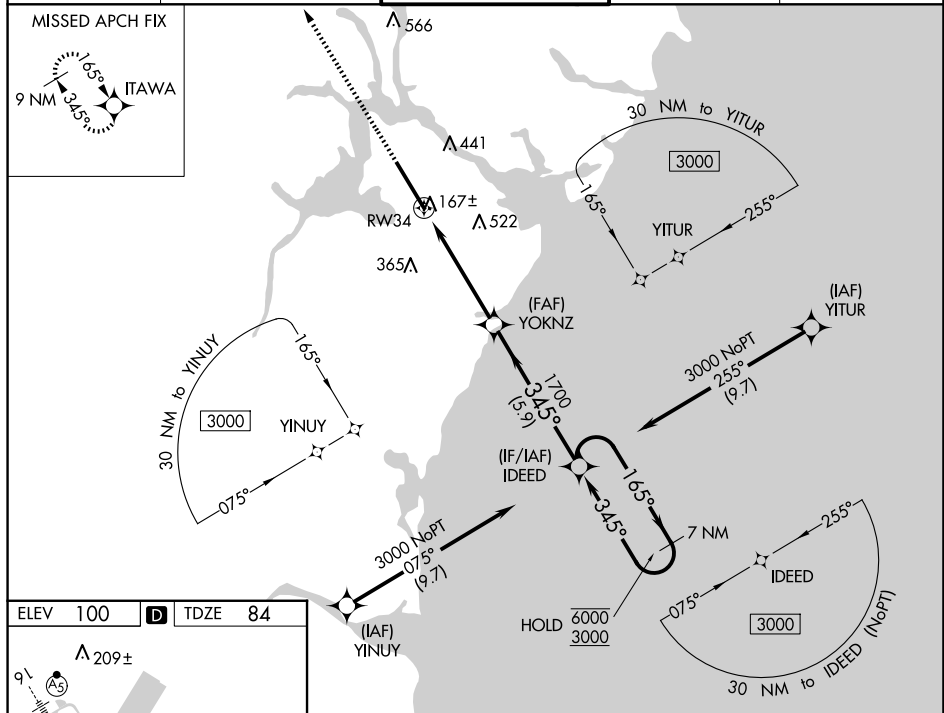


Diagram illustrating the layout of the HIRL Rwy 16-34. The runway is 11,322 x 150 ft. Key features include:

- Runway: 11,322 x 150 ft, labeled "DOWN" with an arrow pointing towards the bottom right.
- Navigation Aids:
 - Δ 248 \pm
 - TWR 230
 - 237V
- Other Markers:
 - ④
 - ⑤
 - ⑥
 - ⑦
 - ⑧
 - ⑨
 - ⑩
 - ⑪
 - ⑫
 - ⑬
 - ⑭
 - ⑮
 - ⑯
 - ⑰
 - ⑱
 - ⑲
 - ⑳
 - ㉑
 - ㉒
 - ㉓
 - ㉔
 - ㉕
 - ㉖
 - ㉗
 - ㉘
 - ㉙
 - ㉚
 - ㉛
 - ㉜
 - ㉝
 - ㉞
 - ㉟
 - ㊱
 - ㊲
 - ㊳
 - ㊴
 - ㊵
 - ㊶
 - ㊷
 - ㊸
 - ㊹
 - ㊺
 - ㊻
 - ㊼
 - ㊽
 - ㊾
 - ㊿
- Angle: 345° to RW34

