

WAAS CH 40012 W16A	APP CRS 165°	Rwy Idg 10518 TDZE 100 Apt Elev 100
--	------------------------	--

RNAV (GPS) RWY 16

PORTSMOUTH INTL AT PEASE (PSM)

RNP APCH - GPS.

▼

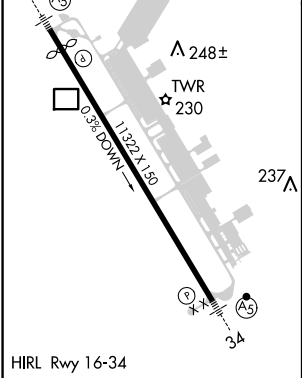
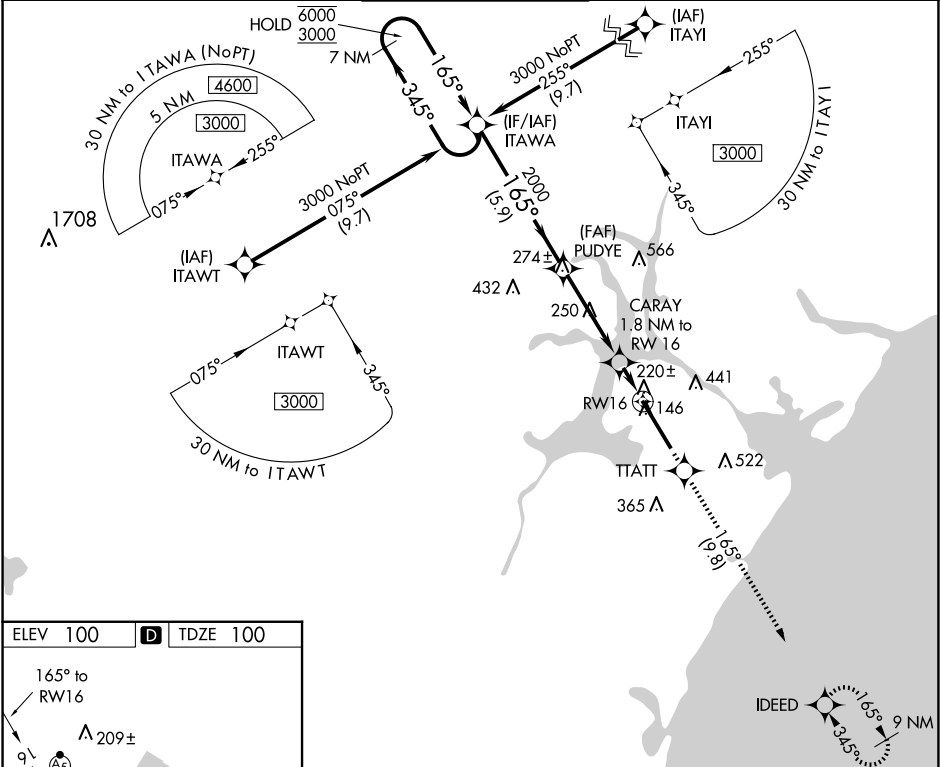
⚠


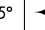


For uncompensated Baro-VNAV systems, LNAV/VNAV NA below -15°C or above 54°C. Circling NA east of Rwy 16-34. For inop ALS, increase LPV Cat E visibility to RVR 4500; increase LNAV/VNAV all Cats visibility to RVR 4500; increase LNAV Cat C/D/E visibility to RVR 5500. * RVR 1800 authorized with use of FD or AP or HUD to DA (NA when using Rochester altimeter setting).

MALSR

MISSED APPROACH:
Climb to 3000 direct
TTATT and track 165° to
IDEED and hold, continue
climb-in-hold to 3000.

ATIS 132.05 273.5	BOSTON APP CON 125.05 269.4	PORTSMOUTH TOWER 128.4 269.0	GND CON 120.95 275.8	CLNC DEL 335.8
-----------------------------	---------------------------------------	--	--------------------------------	--------------------------



VGSI and RNAV glidepath not coincident 7 NM (VGSI Angle 3.00/TCH 72).					3000 ↑		TTATT 		tr 165° 		IDEED 	
Holding Pattern ITAWA					PUDYE							
6000 ← 345° 3000 → 165°					2000 165°		CARAY 1.8 NM to RW16		1 NM to RW16			
GP 3.00° TCH 55					2000		720		RW16			
					← 5.9 NM		← 4 NM		← 0.8 NM		← 1 NM	
CATEGORY		A		B		C		D		E		
LPV DA*				300/24		200 (200-½)						
LNAV/VNAV DA				397/24		297 (300-½)						
LNAV MDA		480/24		380 (400-½)		480/35		380 (400-¾)				
 CIRCLING		500-1		560-1		680-1½		780-2¼		800-2½		
		400 (400-1)		460 (500-1)		580 (600-1½)		680 (700-2¼)		700 (700-2½)		