

WAAS CH 99320 W27A	APP CRS 272°	Rwy Idg 5549 TDZE 34 Apt Elev 48
--	------------------------	---

RNAV (GPS) RWY 27

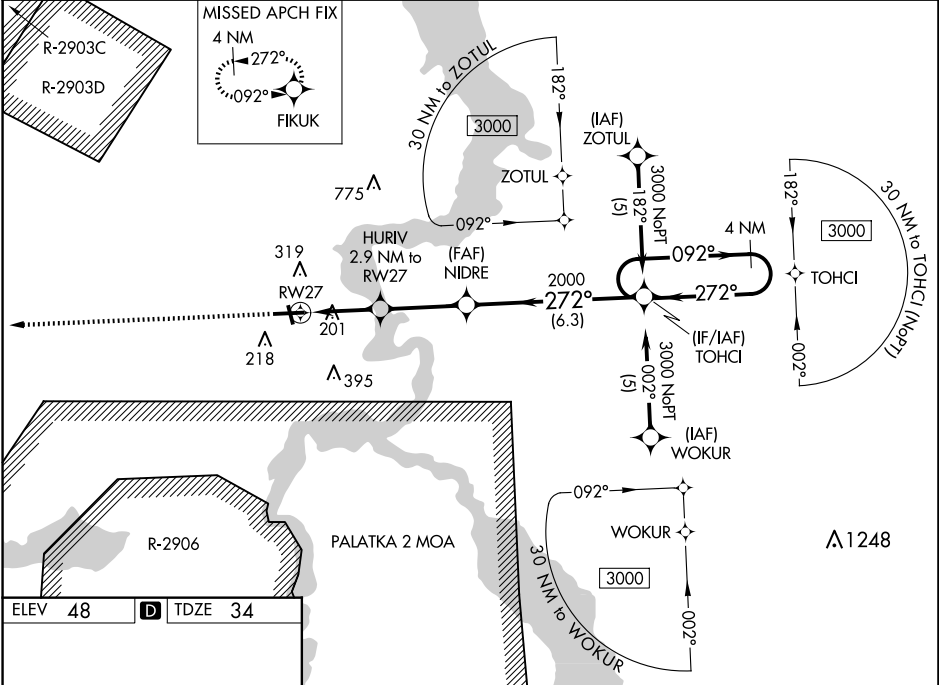
PALATKA MUNI/LT KAY LARKIN FLD (28J)

RNP APCH-GPS

Baro-VNAV NA when using St. Augustine altimeter setting. For uncompensated Baro-VNAV systems, LNAV/VNAV NA below -15°C or above 54°C. Rwy 27 helicopter visibility reduction below ¼ SM NA. When local altimeter setting not received, use St Augustine altimeter setting and increase LPV DA to 419 feet and all visibilities ¼ SM. Increase LNAV/VNAV DA to 582 feet and all visibilities ¼ SM. Increase all MDAs 80 feet and LNAV visibility Cat C/D ½ SM, and Circling visibility Cat C/D ¼ SM. Circling Rwy 17, 35 NA at night.

MISSED APPROACH: Climb to 3000 direct FIKUK and hold. Continue climb-in-hold to 3000.

AWOS-3 119.925	JACKSONVILLE APP CON 118.175 338.25	UNICOM 122.8 (CTAF)
--------------------------	---	-------------------------------



ELEV 48	TDZE 34
---------	---------

3000

FIKUK

VGSI and RNAV glidepath not coincident (VGSI Angle 3.50/TCH 38).

TOHCI

4 NM Holding Pattern

HURIV

2.9 NM to RW27

NIDRE

2000

TOHCI

092°

3000

1.1 NM to RW27

1000

2000

272°

GP 3.00°

TCH 40

CATEGORY	A	B	C	D
LPV DA	354-7/8		320 (400-7/8)	
LNAV/VNAV DA	517-13/8		483 (500-13/8)	
LNAV MDA	460-1	426 (500-1)	460-1 1/4 426 (500-1 1/4)	460-1 1/4 426 (500-1 1/4)
CIRCLING	620-1	572 (600-1)	700-1 3/4 652 (700-1 3/4)	700-2 652 (700-2)

REIL Rwy 9 and 27
MIRL Rwy 9-27 and 17-35

29°40'N-81°41'W

PALATKA MUNI/LT KAY LARKIN FLD (28J)

RNAV (GPS) RWY 27