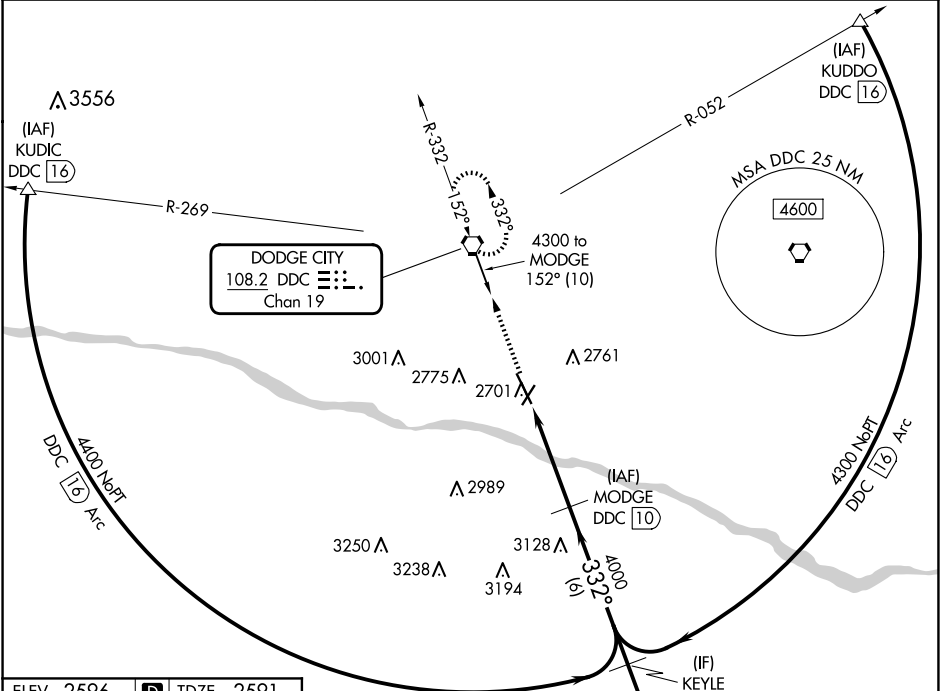


VORTAC DDC 108.2 Chan 19	APP CRS 332°	Rwy Idg TDZE Apt Elev	6329 2591 2596
--	------------------------	-----------------------------	---

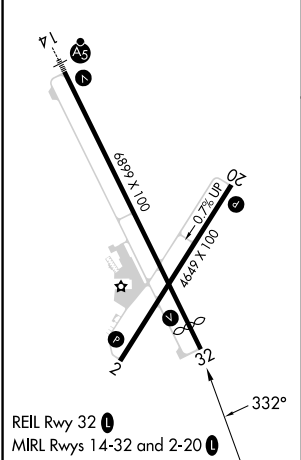
VOR RWY 32
DODGE CITY RGNL (DDC)




DME required.	MISSED APPROACH: Climb to 4300 direct DDC VORTAC and hold, continue climb-in-hold to 4300
---------------	---

ASOS 118.525	KANSAS CITY CENTER 125.2 285.425	UNICOM 122.7 (CTAF) 0
------------------------	--	---------------------------------



ELEV 2596	D	TDZE 2591
-----------	---	-----------



<div>4300</div> <div>↑</div>		<div>DDC</div> <div></div>	<div>MODGE</div> <div>DDC</div> <div>10</div>		<div>Remain within 10 NM</div>
<div></div> <div>DDC</div> <div>5.9</div>		<div>DDC</div> <div>7</div>	<div>≤ 3.18°</div> <div>TCH 40</div>	<div>152°</div>	<div>4300</div>
<div>1.1 NM</div>		<div>3 NM</div>	<div>4000</div>	<div>332°</div>	
CATEGORY	A	B	C	D	
S-32	2980-1	389 (400-1)	2980-1½	389 (400-1½)	
 CIRCLING	3040-1 444 (500-1)	3080-1 484 (500-1)	3320-2 724 (800-2)	3320-2¼ 724 (800-2¼)	

NC-2, 10 JUL 2025 to 07 AUG 2025

NC-2, 10 JUL 2025 to 07 AUG 2025