

WAAS CH 81938 W32A	APP CRS 326°	Rwy Idg 6329 TDZE 2591 Apt Elev 2596
--	------------------------	---

RNAV (GPS) RWY 32

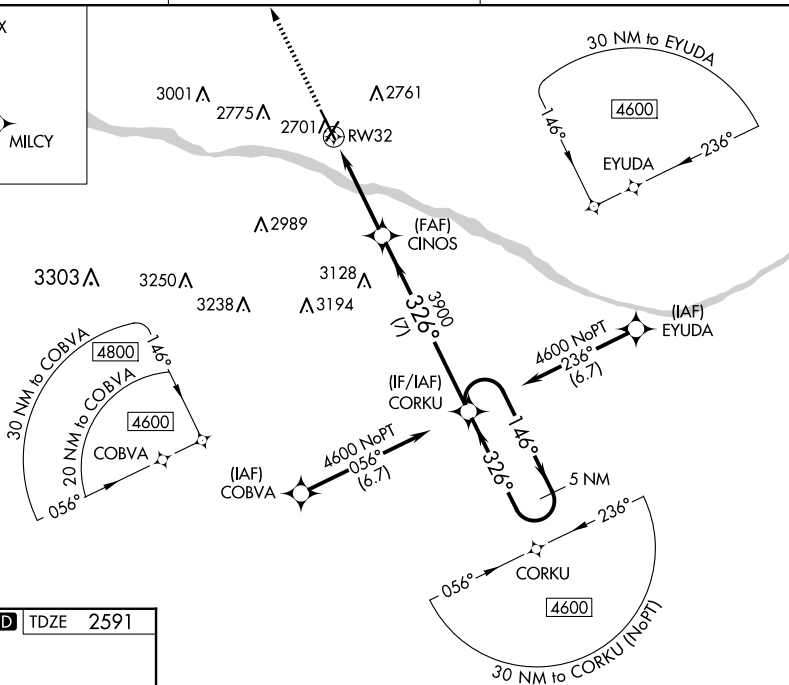
DODGE CITY RGNL (DDC)

A DME/DME RNP-0.3 NA. Baro-VNAV and VDP NA when using Garden City altimeter setting. For uncompensated Baro-VNAV systems, LNAV/VNAV NA below -19°C (-2°F) or above 54°C (130°F). When local altimeter setting not received, use Garden City altimeter setting: increase LPV DA to 2919 feet and all visibilities ¾ miles, LNAV/VNAV DA to 2969 feet and all visibilities ¾ mile; increase all MDA 140 feet and LNAV visibility Cat C and D ¾ mile and Circling visibility Cat C and D ½ mile.

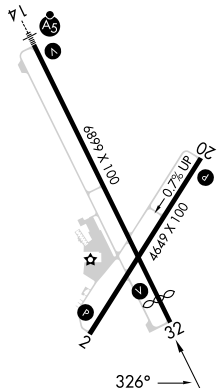
MISSED APPROACH:
Climb to 4600 direct
MILCY and hold.

ASOS 118,525	KANSAS CITY CENTER 125.2 285,425	UNICOM 122.7 (CTAF) 0
------------------------	--	---------------------------------

MISSED APCH FIX



ELEV 2596	D	TDZE 2591
-----------	----------	-----------



REIL Rwy 32 **L**
MIRL Rwys 14-32 and 2-20 **L**

DODGE CITY, KAN
Amdt 2 10DEC15

37°46'N-99°58'W

DODGE CITY RGNL (DDC)
RNAV (GPS) RWY 32

NC-2, 10 JUL 2025 to 07 AUG 2025