

VOR/DME	MVY	APP CRS	Rwy Ldg
<b>114.5</b>		<b>058°</b>	<b>5019</b>
Chan <b>92</b>		TDZE <b>45</b>	
		Apf Elev <b>54</b>	

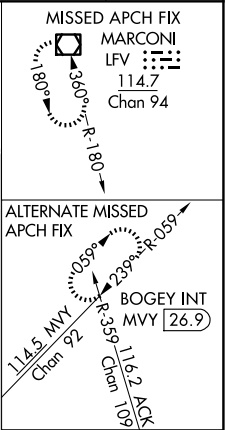
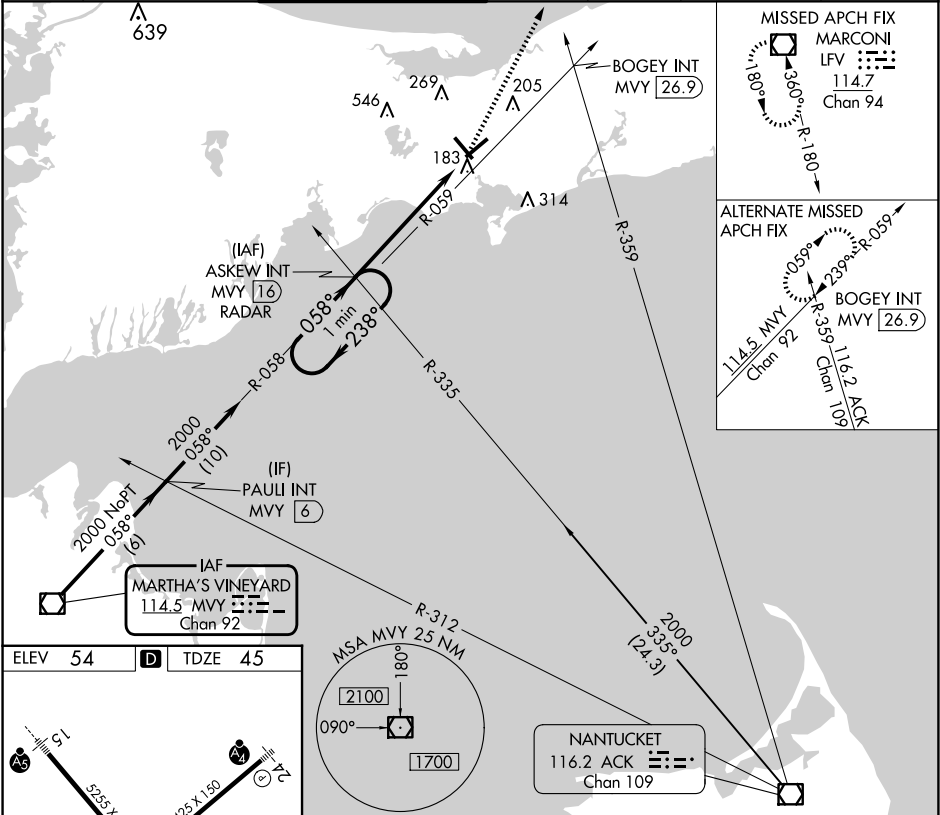
VOR RWY 6  
CAPE COD GATEWAY (HYA)

⚠ When local altimeter setting not received, use Chatham altimeter setting and increase all MDAs 40 feet and S-6 Cat A and Circling Cat C/D visibility ¼ SM.

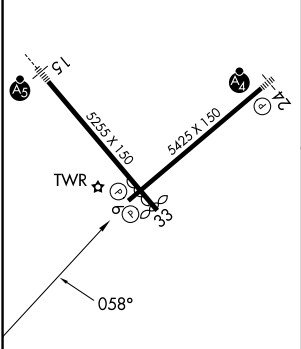
⚠ Rwy 6 helicopter visibility reduction below ¾ SM NA. Circling Rwy 24 at night, operational VGSI required, remain on or above VGSI glidepath until threshold.

MISSED APPROACH: Climb to 2000 direct LFV VOR/DME and hold, continue climb-in-hold to 3000.

ATIS <b>123.8</b>	BOSTON APP CON <b>118.2 284.6</b>	HYANNIS TOWER★ <b>119.5 (CTAF) 0 257.8</b>	GND CON <b>118.45</b>	CLNC DEL <b>125.15</b>	CLNC DEL <b>120.125</b> (When twr closed)	UNICOM <b>122.95</b>
----------------------	--------------------------------------	---	--------------------------	---------------------------	---	-------------------------



ELEV 54	TDZE 45
---------	---------



REIL Rwy 6	HIRL Rwys 6-24 and 15-33
FAF to MAP 6 NM	
Knots	60 90 120 150 180
Min:Sec	6:00 4:00 3:00 2:24 2:00

One Minute Holding Pattern	ASKEW INT MVY 16 RADAR	2000	LFV
2000	238° 058°	058°	MVY 22
3.02° ≥ TCH 37			
6 NM			
CATEGORY	A	B	C
S-6	900-1 855 (900-1)	900-1¼ 855 (900-1¼)	900-2½ 855 (900-2½)
CIRCLING	900-1¼ 846 (900-1¼)	900-2½ 846 (900-2½)	900-2¾ 846 (900-2¾)

NE-1, 10 JUL 2025 to 07 AUG 2025

NE-1, 10 JUL 2025 to 07 AUG 2025