

| | | |
|--|------------------------|---|
| WAAS CH 45799 W06A | APP CRS 066° | Rwy Ldg 5019 TDZE 45 Apt Elev 54 |
|--|------------------------|---|

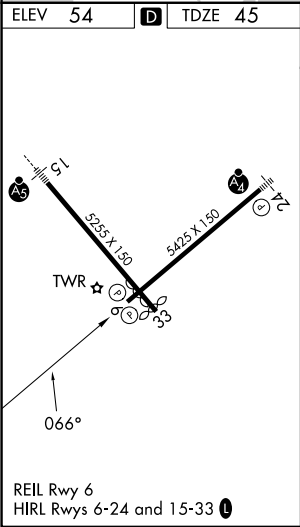
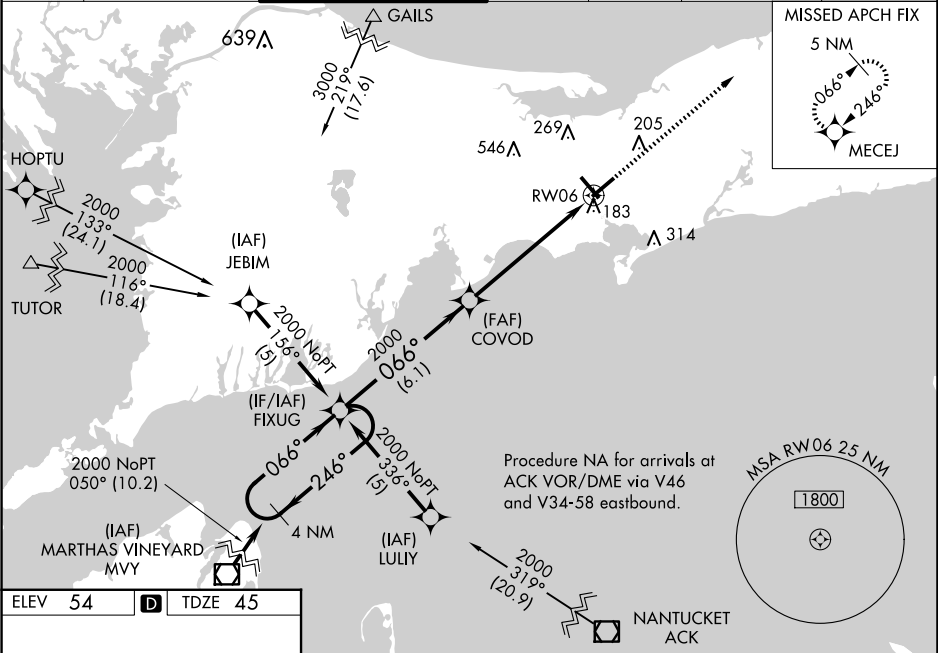
RNAV (GPS) RWY 6
CAPE COD GATEWAY (HYA)

RNP APCH - GPS

Baro-VNAV NA below -15°C. Baro-VNAV NA when using Chatham altimeter setting. When local altimeter setting not received, use Chatham altimeter setting and increase LPV DA to 348 feet; increase LNAV/VNAV DA to 475 feet and increase LNAV/VNAV all Cats visibility 1/8 SM; increase all MDAs 40 feet; LNAV Cats C and D visibility 1/8 SM; Circling Cats C and D visibility 1/4 SM. Circling Rwy 24 at night, operational VGSi required, remain on or above VGSi glidepath until threshold. Rwy 6 helicopter visibility reduction below 3/4 SM NA.

MISSED APPROACH:
Climb to 1700 direct
MECEJ and hold.

| | | | | | | |
|----------------------|--------------------------------------|--|--------------------------|---------------------------|---|-------------------------|
| ATIS 123.8 | BOSTON APP CON 118.2 284.6 | HYANNIS TOWER ★ 119.5 (CTAF) 0 257.8 | GND CON 118.45 | CLNC DEL 125.15 | CLNC DEL 120.125 (When twr closed) | UNICOM 122.95 |
|----------------------|--------------------------------------|--|--------------------------|---------------------------|---|-------------------------|



| | | | | | |
|-----------------------|----------------------|----------------------|------------------------------|------------------------------|-------|
| 4 NM Holding Pattern | | | | 1700 | MECEJ |
| 2000 ← 246° 066° → | | | | RW06 | |
| GP 3.00° TCH 36 | | | | 6.1 NM | |
| 5.9 NM | | | | RW06 | |
| CATEGORY | A | B | C | D | |
| LPV DA | 316-1 | | 271 (300-1) | | |
| LNAV/VNAV DA | 443-1 1/2 | | 398 (400-1 1/2) | | |
| LNAV MDA | 480-1 | 435 (500-1) | 480-1 1/4 435 (500-1 1/4) | 480-1 1/2 435 (500-1 1/2) | |
| CIRCLING | 560-1 506 (600-1) | 580-1 526 (600-1) | 860-2 1/4 806 (900-2 1/4) | 860-2 1/2 806 (900-2 1/2) | |

NE-1, 10 JUL 2025 to 07 AUG 2025

NE-1, 10 JUL 2025 to 07 AUG 2025