

LOC/DME I-HYA 109.15	APP CRS 246°	Rwy Ldg TDZE	5425 43
Chan 28 (Y)	Apt Elev 54		

ILS or LOC RWY 24
CAPE COD GATEWAY (HYA)

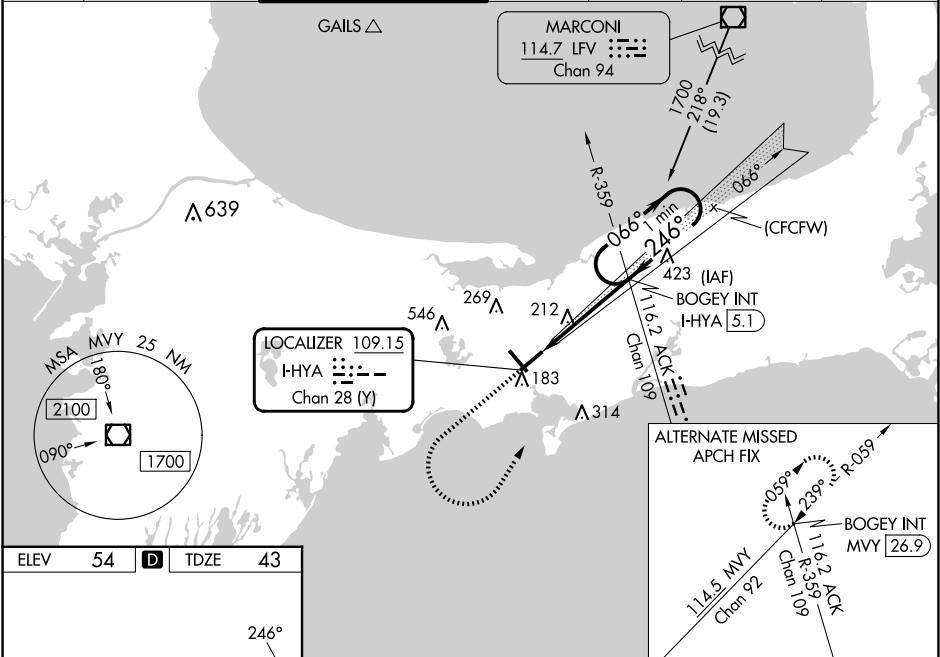
RADAR required.

▼ When local altimeter setting not received, use Chatham altimeter setting and increase all DA to 325 feet and increase all MDA 40 feet, increase S-LOC 24 Cats C/D visibility to RVR 6000 and increase Circling Cats C/D visibility ¼ SM. Inop table does not apply to S-ILS 24 all Cats and S-LOC 24 Cats A/B. For inop ALS, increase S-LOC 24 Cats C/D visibility to 1¼ SM. For inop ALS, when using Chatham altimeter setting, increase S-LOC 24 Cats C/D visibility to 1½ SM. Straight-in/Circling Rwy 24 at night, operational VGSI required, remain on or above VGSI glidepath until threshold.
Rwy 24 helicopter visibility reduction below RVR 5000 NA.

MALSF

MISSED APPROACH:
Climb to 700 then climbing left turn to 1700 on heading 045° and on ACK VOR/DME R-359 to BOGEY INT/I-HYA 5.1 DME and hold.

ATIS 123.8	BOSTON APP CON 118.2 284.6	HYANNIS TOWER ★ 119.5 (CTAF) 0 257.8	GND CON 118.45	CLNC DEL 125.15	CLNC DEL 120.125 (When twr closed)	UNICOM 122.95
----------------------	--------------------------------------	--	--------------------------	---------------------------	---	-------------------------



ELEV 54	D	TDZE 43
<p>REIL Rwy 6 HIRL Rwys 6-24 and 15-33 FAF to MAP 4.1 NM</p>		
Knots	60	90 120 150 180
Min:Sec	4:06	2:44 2:03 1:38 1:22
CIRCLING	560-1 506 (600-1)	580-1 526 (600-1) 860-2¼ 806 (900-2¼) 860-2½ 806 (900-2½)

NE-1, 10 JUL 2025 to 07 AUG 2025

NE-1, 10 JUL 2025 to 07 AUG 2025