

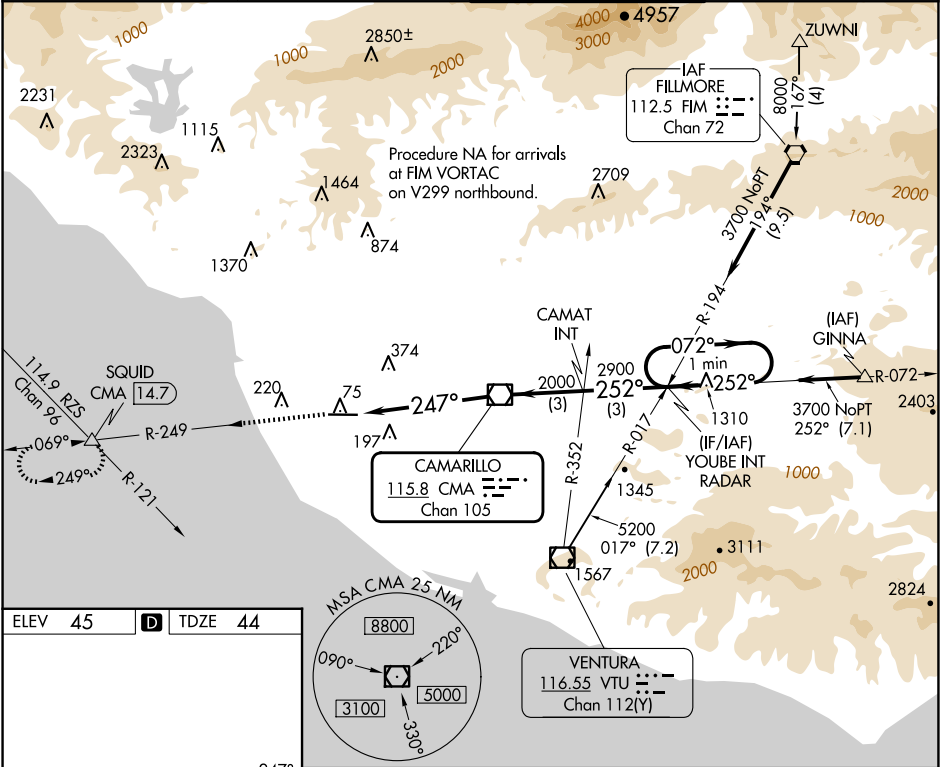
VOR/DME CMA	APP CRS	Rwy Idg	5500
115.8	247°	TDZE	44
Chan 105		Apt Elev	45

VOR RWY 25

OXNARD (OXR)

DME required.	MALSF	MISSED APPROACH: Climb to 2000 on CMA R-249 to SQUID INT/ 14.7 DME and hold.
<div>▼</div> <div>▲</div> <div>For inop ALS, when using Camarillo altimeter setting, increase Cat C/D visibility to 1¾ SM. Rwy 25 helicopter visibility reduction below ¾ SM NA. When local altimeter setting not received, use CMA altimeter setting and increase all MDAs 20 feet, increase Circling Cat C visibility ¼ SM.</div>	<div>🚗</div>	

ATIS 118.05	POINT MUGU APP CON★ 124.7 335.5	OXNARD TOWER★ 134.95 (CTAF) 0 257.8	GND CON 121.9
----------------	------------------------------------	--	------------------



ELEV 45	D	TDZE 44
REIL Rwy 7	MIRL Rwy 7-25	
FAF to MAP 5.3 NM		
Knots	60	90 120 150 180
Min:Sec	5:18	3:32 2:39 2:07 1:46
CATEGORY	A	B C D
S-25	620-1	576 (600-1) 620-1¾ 576 (600-1¾)
CIRCLING	620-1	575 (600-1) 700-1¾ 655 (700-1¾) 760-2¼ 715 (800-2¼)