

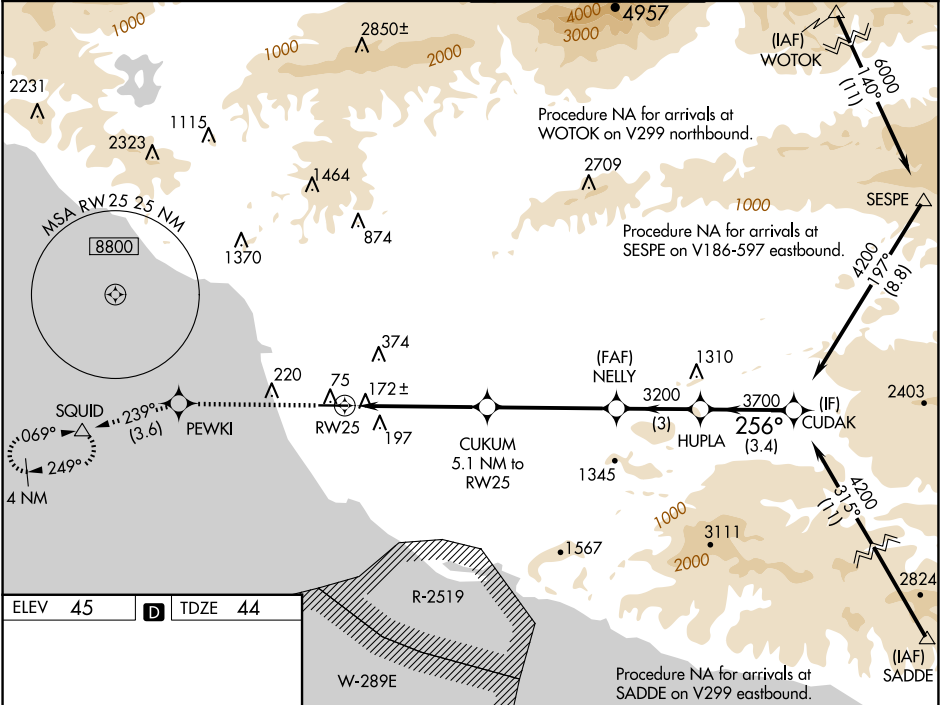
WAAS CH <b>86299</b> <b>W25A</b>	APP CRS <b>256°</b>	Rwy Idg TDZE <b>44</b> Apt Elev <b>45</b>
--	------------------------	---

RNAV (GPS) RWY 25

OXNARD (OXR)

RNP APCH - GPS. <div><div><div>⚠</div><div>Inoperative table does not apply. Baro-VNAV NA when using Camarillo altimeter setting. For uncompensated Baro-VNAV systems, LNAV/VNAV NA below -15°C or above 43°C. When local altimeter setting not received, use Camarillo altimeter setting and increase LPV DA to 440 feet, LNAV/VNAV DA to 437 feet. Increase all MDAs 20 feet and Circling Cat C visibility ¼ SM.</div></div></div>	MALSF <div><div><div>⬇</div><div>⬆</div><div>⬇</div></div></div>	MISSED APPROACH: Climb to 2000 direct PEWKI and on track 239° to SQUID and hold.
---	---	--

ATIS <b>118.05</b>	POINT MUGU APP CON* <b>124.7 335.5</b>	OXNARD TOWER* <b>134.95 (CTAF) 257.8</b>	GND CON <b>121.9</b>
-----------------------	---	---	-------------------------



ELEV 45	D	TDZE 44
REIL Rwy 7	MIRL Rwy 7-25	
2000	PEWKI	SQUID
↑	tr 239°	△
1.3 NM to RW25	CUKUM 5.1 NM to RW25	
1.3 NM	3.8 NM	4.6 NM
3.8 NM	4.6 NM	3 NM
4.6 NM	3 NM	3.4 NM
3 NM	3.4 NM	
CATEGORY	A	B
LPV DA	424-1	380 (400-1)
LNAV/VNAV DA	421-1	377 (400-1)
LNAV MDA	520-1 476 (500-1)	520-1 <sup>3</sup> / <sub>8</sub> 476 (500-1 <sup>3</sup> / <sub>8</sub> )
CIRCLING	520-1 475 (500-1)	700-1 <sup>3</sup> / <sub>4</sub> 760-2 <sup>1</sup> / <sub>4</sub> 655 (700-1 <sup>3</sup> / <sub>4</sub> ) 715 (800-2 <sup>1</sup> / <sub>4</sub> )