

LOC I-OCR	APP CRS	Rwy ldg	5500
108.7	256°	TDZE	44
		Apt Elev	45

ILS or LOC RWY 25

OXNARD (OXR)

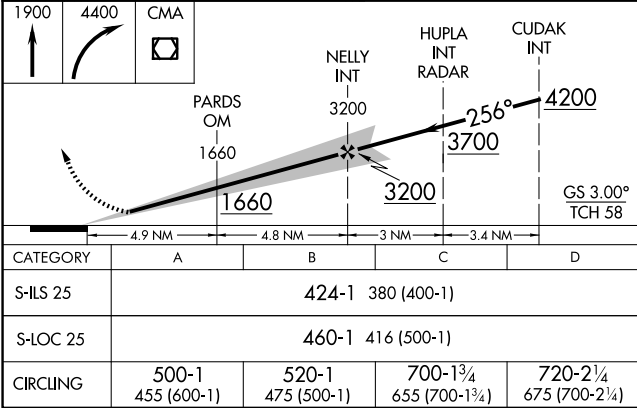
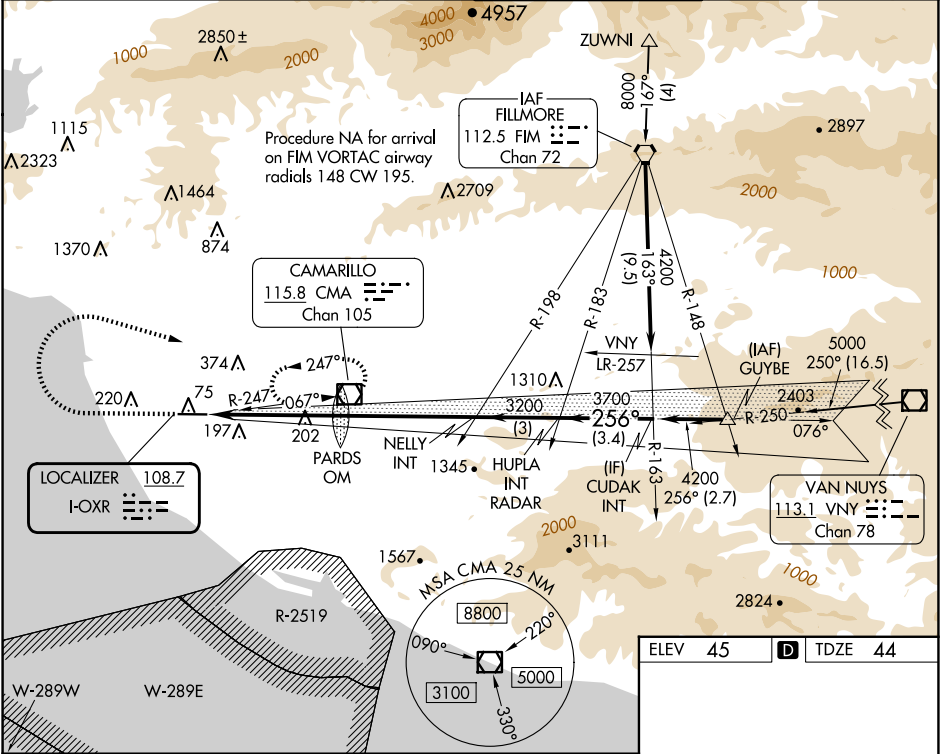
⚠

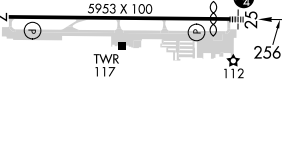


Rwy 25 helicopter visibility reduction below ¾ SM NA. Autopilot coupled approach NA below 1086. Inop table does not apply.

MALSF

MISSED APPROACH: Climb to 1900 then climbing right turn to 4400 direct CMA VOR/DME and hold, continue climb-in-hold to 4400.

ATIS	POINT MUGU APP CON ★	OXNARD TOWER ★	GND CON
118.05	124.7 335.5	134.95 (CTAF) 0 257.8	121.9



ELEV	45	D	TDZE	44	
					
REIL Rwy 7 					
MIRL Rwy 7-25 					
FAF to MAP 9.7 NM					
Knots	60	90	120	150	180
Min:Sec	9:42	6:28	4:51	3:53	3:14