

APP CRS
177°

Rwy Idg
5000

TDZE
327

Apt Elev
328

RNAV (GPS) RWY 19

FLOYD BENNETT MEML (GFL)

RNP APCH.

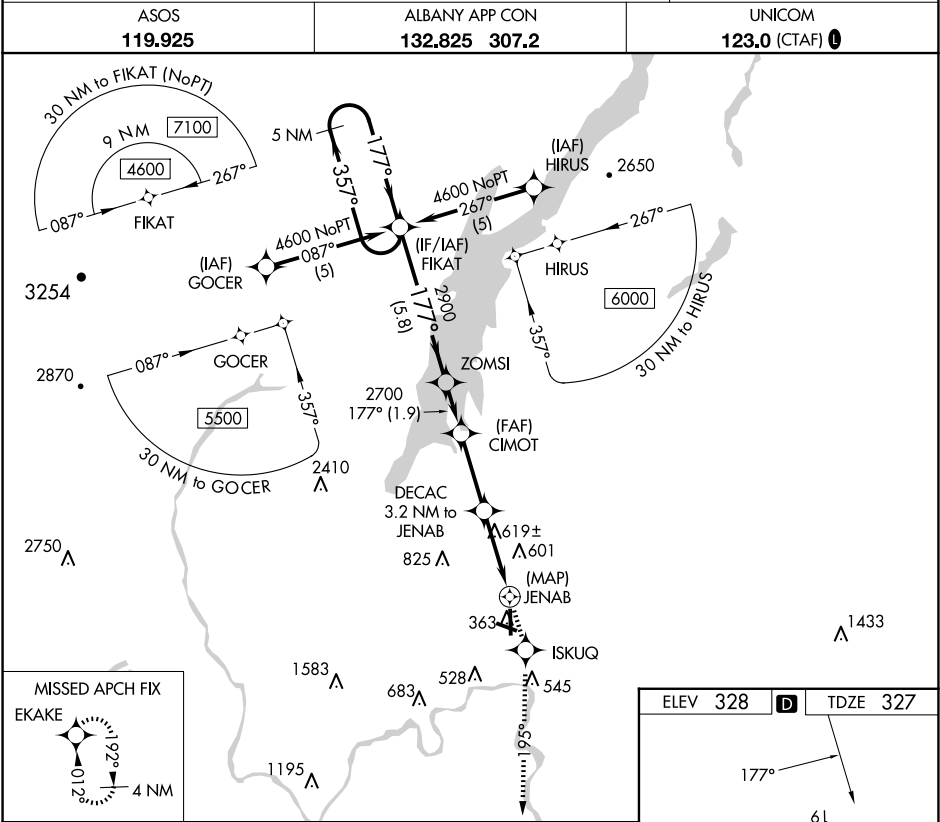
Circling NA for Cat D NW of Rwy 12 and 19. Rwy 19 helicopter visibility reduction below $\frac{3}{4}$ SM NA. Circling Rwy 12, 30 NA at night.

MISSED APPROACH: Climb to 3000 direct ISKUQ and on track 195° to EKAKE and hold.

ASOS
119.925

ALBANY APP CON
132.825 307.2

UNICOM
123.0 (CTAF) 0



5 NM Holding Pattern

FIKAT

4600

357°

177°

ZOMSI

CIMOT

2900

2700

1720

DECAC 3.2 NM to JENAB

JENAB

Visual Segment - Obstacles.

3000 ISKUQ

tr 195°

EKAKE

5.8 NM

1.9 NM

2.9 NM

3.2 NM

0.5 NM

CATEGORY	A	B	C	D
LNAV MDA	880-1	553 (600-1)	880-1 $\frac{1}{2}$ 553 (600-1 $\frac{1}{2}$)	880-1 $\frac{1}{4}$ 553 (600-1 $\frac{1}{4}$)
C CIRCLING	880-1	552 (600-1)	940-1 $\frac{3}{4}$ 612 (700-1 $\frac{3}{4}$)	1420-3 1092 (1100-3)

HIRL Rwy 1-19 0

MIRL Rwy 12-30 0