

WAAS CH 87118 W01A	APP CRS 012°	Rwy Idg TDZE Apt Elev	5000 324 328
--	------------------------	-----------------------------	---

RNAV (GPS) RWY 1

FLOYD BENNETT MEML (GFL)

V For uncompensated Baro-VNAV systems, LNAV/VNAV NA below -18°C (0°F) or above 54°C (130°F). DME/DME RNP-0.3 NA. When local altimeter setting not received use Albany altimeter setting and increase all DA 91 feet and all MDA 100 feet; increase LNAV/VNAV all Cats $\frac{1}{2}$ SM, LNAV Cat C/D and Circling Cat C visibility $\frac{1}{4}$ SM. For inoperative ALS when using Albany altimeter setting, increase LPV all Cats visibility to $\frac{1}{2}$ SM. Baro-VNAV and VDP NA when using Albany altimeter setting. Circling Rwy 12, 30 NA at night. Rwy 12, 30 helicopter visibility reduction below 1 SM NA.

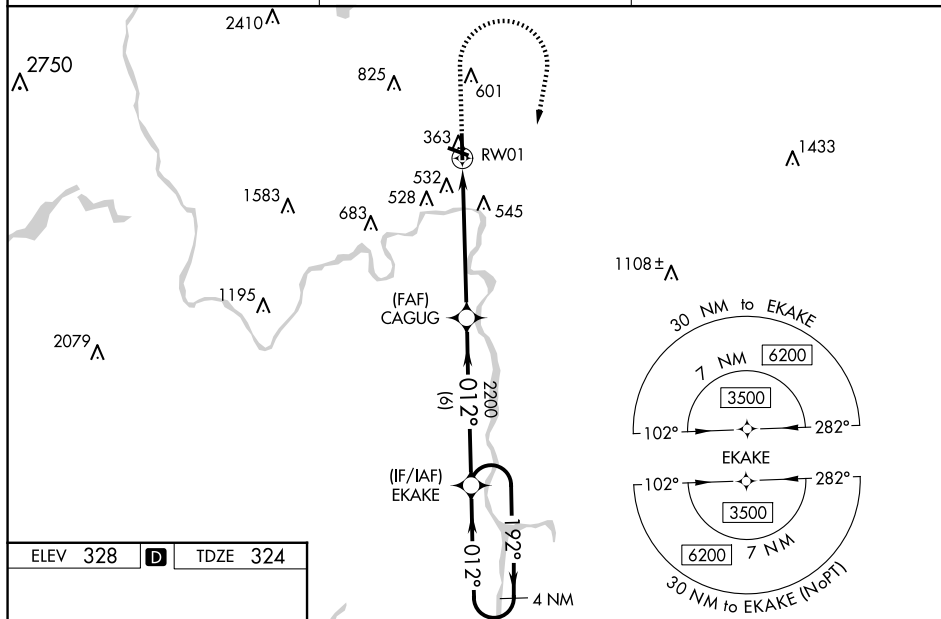
 -19°C

MALSR

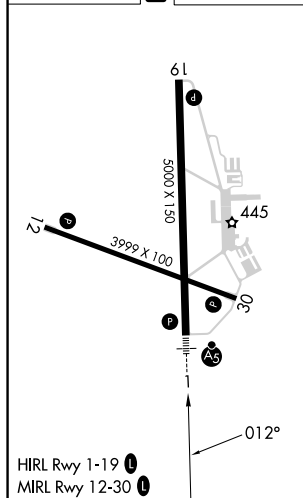


MISSED APPROACH:
Climb to 900 then
climbing right turn
to 3500 direct
EKAKE and hold.

ASOS 119.925	ALBANY APP CON 132.825 307.2	UNICOM 123.0 (CTAF) 0
------------------------	--	---------------------------------



ELEV 328	D	TDZE 324
----------	----------	----------



* LNAV only.

* 1.3 NM to RW01

RW01

1.3 NM

4.4 NM

6 NM

CAGUG 2200

2200

EKAKE

4 NM Holding Pattern

192°

012°

3500

GP 3.00°

TCH 53

CATEGORY	A	B	C	D
LPV DA		524-1/2	200 (200-1/2)	
LNAV/VNAV DA		835-1 1/4	511 (600-1 1/4)	
LNAV MDA	800-1/2	476 (500-1/2)	800-1	476 (500-1)
C CIRCLING	840-1 512 (600-1)	860-1 532 (600-1)	940-1 3/4 612 (700-1 3/4)	1960-3 1632 (1700-3)