

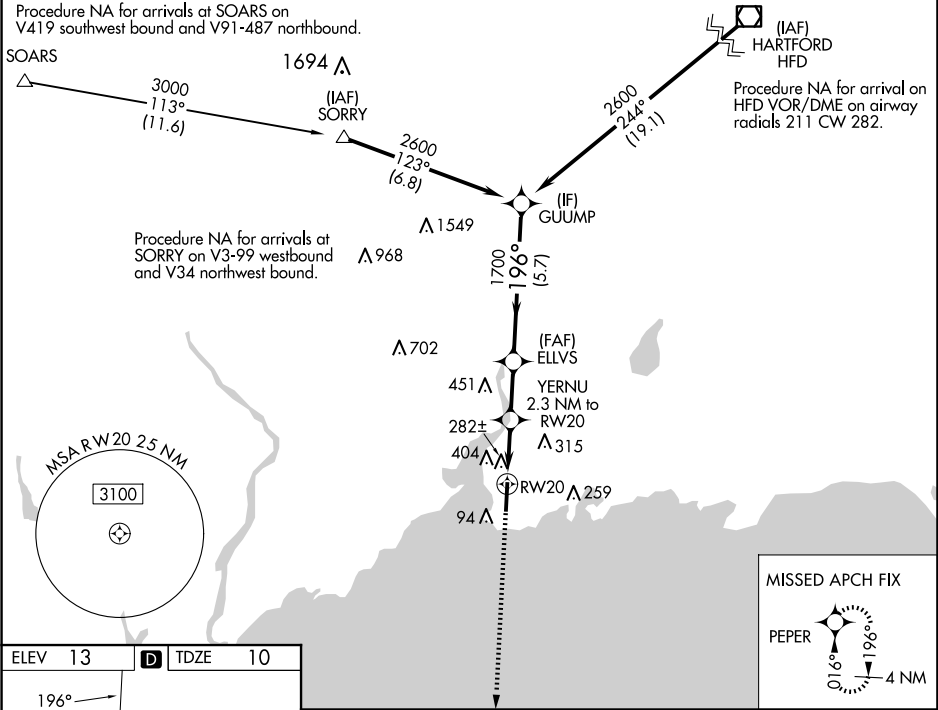
WAAS CH 45937 W20A	APP CRS 196°	Rwy Idg TDZE 10 Apt Elev 13	5600
--	------------------------	---	-------------

RNAV (GPS) RWY 20

TWEED/NEW HAVEN (HVN)

RNP APCH - GPS.		MISSED APPROACH: Climb to 1800 direct PEPER and hold.
<div><div>T</div><div>A</div></div>	Rwy 20 helicopter visibility reduction below ¾ SM NA.	

ATIS 133.65	NEW YORK APP CON 124.075 343.65	NEW HAVEN TOWER ★ 124.8 (CTAF) 0	GND CON 121.7	CLNC DEL 121.7	CLNC DEL 121.7 (When twr closed)	UNICOM 122.95
-----------------------	---	---	-------------------------	--------------------------	---	-------------------------



1800		PEPER	GUUMP	
1.3 NM		1.3 NM	1 NM	2.1 NM
RW20		YERNU 2.3 NM to RW20	ELLVS 1700	GUUMP 2600
1.3 NM		1.3 NM	1 NM	2.1 NM
RW20		YERNU 2.3 NM to RW20	ELLVS 1700	GUUMP 2600
1.3 NM		1.3 NM	1 NM	2.1 NM
RW20		YERNU 2.3 NM to RW20	ELLVS 1700	GUUMP 2600
1.3 NM		1.3 NM	1 NM	2.1 NM
RW20		YERNU 2.3 NM to RW20	ELLVS 1700	GUUMP 2600
1.3 NM		1.3 NM	1 NM	2.1 NM
RW20		YERNU 2.3 NM to RW20	ELLVS 1700	GUUMP 2600
1.3 NM		1.3 NM	1 NM	2.1 NM
RW20		YERNU 2.3 NM to RW20	ELLVS 1700	GUUMP 2600
1.3 NM		1.3 NM	1 NM	2.1 NM
RW20		YERNU 2.3 NM to RW20	ELLVS 1700	GUUMP 2600
1.3 NM		1.3 NM	1 NM	2.1 NM
RW20		YERNU 2.3 NM to RW20	ELLVS 1700	GUUMP 2600
1.3 NM		1.3 NM	1 NM	2.1 NM
RW20		YERNU 2.3 NM to RW20	ELLVS 1700	GUUMP 2600
1.3 NM		1.3 NM	1 NM	2.1 NM
RW20		YERNU 2.3 NM to RW20	ELLVS 1700	GUUMP 2600
1.3 NM		1.3 NM	1 NM	2.1 NM
RW20		YERNU 2.3 NM to RW20	ELLVS 1700	GUUMP 2600
1.3 NM		1.3 NM	1 NM	2.1 NM
RW20		YERNU 2.3 NM to RW20	ELLVS 1700	GUUMP 2600
1.3 NM		1.3 NM	1 NM	2.1 NM
RW20		YERNU 2.3 NM to RW20	ELLVS 1700	GUUMP 2600
1.3 NM		1.3 NM	1 NM	2.1 NM
RW20		YERNU 2.3 NM to RW20	ELLVS 1700	GUUMP 2600
1.3 NM		1.3 NM	1 NM	2.1 NM
RW20		YERNU 2.3 NM to RW20	ELLVS 1700	GUUMP 2600
1.3 NM		1.3 NM	1 NM	2.1 NM
RW20		YERNU 2.3 NM to RW20	ELLVS 1700	GUUMP 2600
1.3 NM		1.3 NM	1 NM	2.1 NM
RW20		YERNU 2.3 NM to RW20	ELLVS 1700	GUUMP 2600
1.3 NM		1.3 NM	1 NM	2.1 NM
RW20		YERNU 2.3 NM to RW20	ELLVS 1700	GUUMP 2600
1.3 NM		1.3 NM	1 NM	2.1 NM
RW20		YERNU 2.3 NM to RW20	ELLVS 1700	GUUMP 2600
1.3 NM		1.3 NM	1 NM	2.1 NM
RW20		YERNU 2.3 NM to RW20	ELLVS 1700	GUUMP 2600
1.3 NM		1.3 NM	1 NM	2.1 NM
RW20		YERNU 2.3 NM to RW20	ELLVS 1700	GUUMP 2600
1.3 NM		1.3 NM	1 NM	2.1 NM
RW20		YERNU 2.3 NM to RW20	ELLVS 1700	GUUMP 2600
1.3 NM		1.3 NM	1 NM	2.1 NM
RW20		YERNU 2.3 NM to RW20	ELLVS 1700	GUUMP 2600
1.3 NM		1.3 NM	1 NM	2.1 NM
RW20		YERNU 2.3 NM to RW20	ELLVS 1700	GUUMP 2600
1.3 NM		1.3 NM	1 NM	2.1 NM
RW20		YERNU 2.3 NM to RW20	ELLVS 1700	GUUMP 2600
1.3 NM		1.3 NM	1 NM	2.1 NM
RW20		YERNU 2.3 NM to RW20	ELLVS 1700	GUUMP 2600
1.3 NM		1.3 NM	1 NM	2.1 NM
RW20		YERNU 2.3 NM to RW20	ELLVS 1700	GUUMP 2600
1.3 NM		1.3 NM	1 NM	2.1 NM
RW20		YERNU 2.3 NM to RW20	ELLVS 1700	GUUMP 2600
1.3 NM		1.3 NM	1 NM	2.1 NM
RW20		YERNU 2.3 NM to RW20	ELLVS 1700	GUUMP 2600
1.3 NM		1.3 NM	1 NM	2.1 NM
RW20		YERNU 2.3 NM to RW20	ELLVS 1700	GUUMP 2600
1.3 NM		1.3 NM	1 NM	2.1 NM
RW20		YERNU 2.3 NM to RW20	ELLVS 1700	GUUMP 2600
1.3 NM		1.3 NM	1 NM	2.1 NM
RW20		YERNU 2.3 NM to RW20	ELLVS 1700	GUUMP 2600
1.3 NM		1.3 NM	1 NM	2.1 NM
RW20		YERNU 2.3 NM to RW20	ELLVS 1700	GUUMP 2600
1.3 NM		1.3 NM	1 NM	2.1 NM
RW20		YERNU 2.3 NM to RW20	ELLVS 1700	GUUMP 2600
1.3 NM		1.3 NM	1 NM	2.1 NM
RW20		YERNU 2.3 NM to RW20	ELLVS 1700	GUUMP 2600
1.3 NM		1.3 NM	1 NM	2.1 NM
RW20		YERNU 2.3 NM to RW20	ELLVS 1700	GUUMP 2600
1.3 NM		1.3 NM	1 NM	2.1 NM
RW20		YERNU 2.3 NM to RW20	ELLVS 1700	GUUMP 2600
1.3 NM		1.3 NM	1 NM	2.1 NM
RW20		YERNU 2.3 NM to RW20	ELLVS 1700	GUUMP 2600
1.3 NM		1.3 NM	1 NM	2.1 NM
RW20		YERNU 2.3 NM to RW20	ELLVS 1700	GUUMP 2600
1.3 NM		1.3 NM	1 NM	2.1 NM
RW20		YERNU 2.3 NM to RW20	ELLVS 1700	GUUMP 2600
1.3 NM		1.3 NM	1 NM	2.1 NM
RW20		YERNU 2.3 NM to RW20	ELLVS 1700	GUUMP 2600
1.3 NM		1.3 NM	1 NM	2.1 NM
RW20		YERNU 2.3 NM to RW20	ELLVS 1700	GUUMP 2600
1.3 NM		1.3 NM	1 NM	2.1 NM
RW20		YERNU 2.3 NM to RW20	ELLVS 1700	GUUMP 2600
1.3 NM		1.3 NM	1 NM	2.1 NM
RW20		YERNU 2.3 NM to RW20	ELLVS 1700	GUUMP 2600
1.3 NM		1.3 NM	1 NM	2.1 NM
RW20		YERNU 2.3 NM to RW20	ELLVS 1700	GUUMP 2600
1.3 NM		1.3 NM	1 NM	2.1 NM
RW20		YERNU 2.3 NM to RW20	ELLVS 1700	GUUMP 2600
1.3 NM		1.3 NM	1 NM	2.1 NM
RW20		YERNU 2.3 NM to RW20	ELLVS 1700	GUUMP 2600
1.3 NM		1.3 NM	1 NM	2.1 NM
RW20		YERNU 2.3 NM to RW20	ELLVS 1700	GUUMP 2600
1.3 NM		1.3 NM	1 NM	2.1 NM
RW20		YERNU 2.3 NM to RW20	ELLVS 1700	GUUMP 2600
1.3 NM		1.3 NM	1 NM	2.1 NM
RW20		YERNU 2.3 NM to RW20	ELLVS 1700	GUUMP 2600
1.3 NM		1.3 NM	1 NM	2.1 NM
RW20		YERNU 2.3 NM to RW20	ELLVS 1700	GUUMP 2600
1.3 NM		1.3 NM	1 NM	2.1 NM
RW20		YERNU 2.3 NM to RW20	ELLVS 1700	GUUMP 2600
1.3 NM		1.3 NM	1 NM	2.1 NM
RW20		YERNU 2.3 NM to RW20	ELLVS 1700	GUUMP 2600
1.3 NM		1.3 NM	1 NM	2.1 NM
RW20		YERNU 2.3 NM to RW20	ELLVS 1700	GUUMP 2600
1.3 NM		1.3 NM	1 NM	2.1 NM
RW20		YERNU 2.3 NM to RW20	ELLVS 1700	GUUMP 2600
1.3 NM		1.3 NM	1 NM	2.1 NM
RW20		YERNU 2.3 NM to RW20	ELLVS 1700	GUUMP 2600
1.3 NM		1.3 NM	1 NM	2.1 NM
RW20		YERNU 2.3 NM to RW20	ELLVS 1700	GUUMP 2600
1.3 NM		1.3 NM	1 NM	2.1 NM
RW20		YERNU 2.3 NM to RW20	ELLVS 1700	GUUMP 2600
1.3 NM		1.3 NM	1 NM	2.1 NM
RW20		YERNU 2.3 NM to RW20	ELLVS 1700	GUUMP 2600
1.3 NM		1.3 NM	1 NM	2.1 NM
RW20		YERNU 2.3 NM to RW20	ELLVS 1700	GUUMP 2600
1.3 NM		1.3 NM	1 NM	2.1 NM
RW20		YERNU 2.3 NM to RW20	ELLVS 1700	GUUMP 2600
1.3 NM		1.3 NM	1 NM	2.1 NM
RW20		YERNU 2.3 NM to RW20	ELLVS 1700	GUUMP 2600
1.3 NM		1.3 NM	1 NM	2.1 NM
RW20		YERNU 2.3 NM to RW20	ELLVS 1700	GUUMP 2600
1.3 NM		1.3 NM	1 NM	2.1 NM
RW20		YERNU 2.3 NM to RW20	ELLVS 1700	GUUMP 2600
1.3 NM		1.3 NM	1 NM	2.1 NM
RW20		YERNU 2.3 NM to RW20	ELLVS 1700	GUUMP 2600
1.3 NM		1.3 NM	1 NM	2.1 NM
RW20		YERNU 2.3 NM to RW20	ELLVS 1700	GUUMP 2600
1.3 NM		1.3 NM	1 NM	2.1 NM
RW20		YERNU 2.3 NM to RW20	ELLVS 1700	GUUMP 2600
1.3 NM		1.3 NM	1 NM	2.1 NM
RW20		YERNU 2.3 NM to RW20	ELLVS 1700	GUUMP 2600
1.3 NM		1.3 NM	1 NM	2.1 NM
RW20		YERNU 2.3 NM to RW20	ELLVS 1700	GUUMP 2600
1.3 NM		1.3 NM	1 NM	2.1 NM
RW20		YERNU 2.3 NM to RW20	ELLVS 1700	GUUMP 2600
1.3 NM		1.3 NM	1 NM	2.1 NM
RW20		YERNU 2.3 NM to RW20	ELLVS 1700	GUUMP 2600
1.3 NM		1.3 NM	1 NM	2.1 NM
RW20		YERNU 2.3 NM to RW20	ELLVS 1700	GUUMP 2600
1.3 NM		1.3 NM	1 NM	2.1 NM
RW20		YERNU 2.3 NM to RW20	ELLVS 1700	GUUMP 2600
1.3 NM		1.3 NM	1 NM	2.1 NM
RW20		YERNU 2.3 NM to RW20	ELLVS 1700	GUUMP 2600
1.3 NM		1.3 NM	1 NM	2.1 NM
RW20		YERNU 2.3 NM to RW20	ELLVS 1700	GUUMP 2600
1.3 NM		1.3 NM	1 NM	2.1 NM
RW20		YERNU 2.3 NM to RW20	ELLVS 1700	GUUMP 2600
1.3 NM		1.3 NM	1 NM	2.1 NM
RW20		YERNU 2.3 NM to RW20	ELLVS 1700	GUUMP 2600
1.3 NM		1.3 NM	1 NM	2.1 NM
RW20		YERNU 2.3 NM to RW20	ELLVS 1700	GUUMP 2600
1.3 NM		1.3 NM	1 NM	2.1 NM
RW20		YERNU 2.3 NM to RW20	ELLVS 1700	GUUMP 2600
1.3 NM		1.3 NM	1 NM	2.1 NM
RW20		YERNU 2.3 NM to RW20	ELLVS 1700	GUUMP 2600
1.3 NM		1.3 NM	1 NM	2.1 NM
RW20		YERNU 2.3 NM to RW20	ELLVS 1700	GUUMP 2600
1.3 NM		1.3 NM	1 NM	2.1 NM
RW20		YERNU 2.3 NM to RW20	ELLVS 1700	GUUMP 2600
1.3 NM		1.3 NM	1 NM	2.1 NM
RW20		YERNU 2.3 NM to RW20	ELLVS 1700	GUUMP 2600
1.3 NM		1.3 NM	1 NM	2.1 NM
RW20		YERNU 2.3 NM to RW20	ELLVS 1700	GUUMP 2600
1.3 NM		1.3 NM	1 NM	2.1 NM
RW20		YERNU 2.3 NM to RW20	ELLVS 1700	GUUMP 2600
1.3 NM		1.3 NM	1 NM	2.1 NM
RW20		YERNU 2.3 NM to RW20	ELLVS 1700	GUUMP 2600
1.3 NM		1.3 NM	1 NM	2.1 NM
RW20		YERNU 2.3 NM to RW20	ELLVS 1700	GUUMP 2600