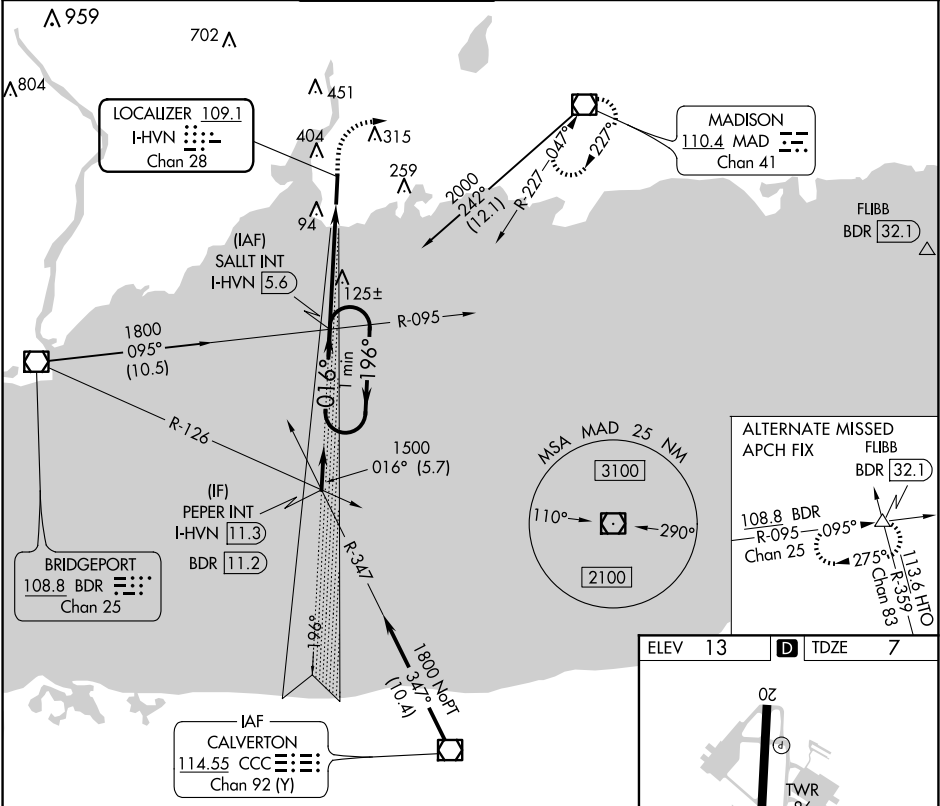


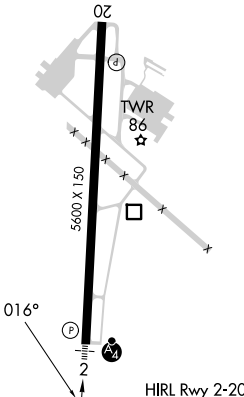

LOC/DME I-HVN 109.1 Chan 28	APP CRS 016°	Rwy Idg TDZE 7 Apt Elev 13
-------------------------------------------------	------------------------	------------------------------------------------

ILS or LOC RWY 2
TWEED/NEW HAVEN (HVN)

<div><div>▼</div><div>▲</div></div> <div>Rwy 2 helicopter visibility reduction below RVR 4000 NA. For inop ALS, increase S-ILS all Cats visibility to RVR 4500.</div>			<div>MALSF</div> <div></div>	<div>MISSED APPROACH: Climb to 600 then climbing right turn to 2000 direct MAD VOR/DME and hold.</div>		
<div>ATIS</div> <div>133.65</div>	<div>NEW YORK APP CON</div> <div>124.075 343.65</div>	<div>NEW HAVEN TOWER ★</div> <div>124.8 (CTAF) 0</div>	<div>GND CON</div> <div>121.7</div>	<div>CLNC DEL</div> <div>121.7</div>	<div>CLNC DEL</div> <div>121.7 (When twr closed)</div>	<div>UNICOM</div> <div>122.95</div>



One Minute Holding Pattern		SALT INT I-HVN 5.6		600		2000		MAD	
1500		1500		1500		1500		1500	
196°		016°		016°		016°		016°	
GS 3.00°		TCH 50		3.4 NM		1.1 NM		3.4 NM	
CATEGORY	A	B	C	D					
S-ILS 2	294/40				287 (300-¾)				
S-LOC 2	400/40 393 (400-¾)				400/45 393 (400-¾)				
✪ CIRCLING	720-1 707 (800-1)				780-2¼ 767 (800-2¼)				
					880-2¾ 867 (900-2¾)				

ELEV	13	D	TDZE	7	
					
HIRL Rwy 2-20 					
FAF to MAP 4.5 NM					
Knots	60	90	120	150	180
Min:Sec	4:30	3:00	2:15	1:48	1:30

NE-1, 10 JUL 2025 to 07 AUG 2025

NE-1, 10 JUL 2025 to 07 AUG 2025