

VOR/DME EWN

113.6

Chan 83

APP CRS

226°

Rwy Idg

6153

TDZE

17

Apt Elev

18

VOR RWY 22

COASTAL CAROLINA RGNL (EWN)

⚠

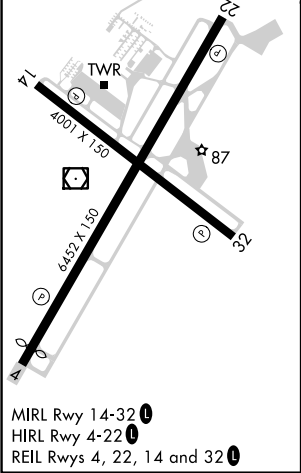
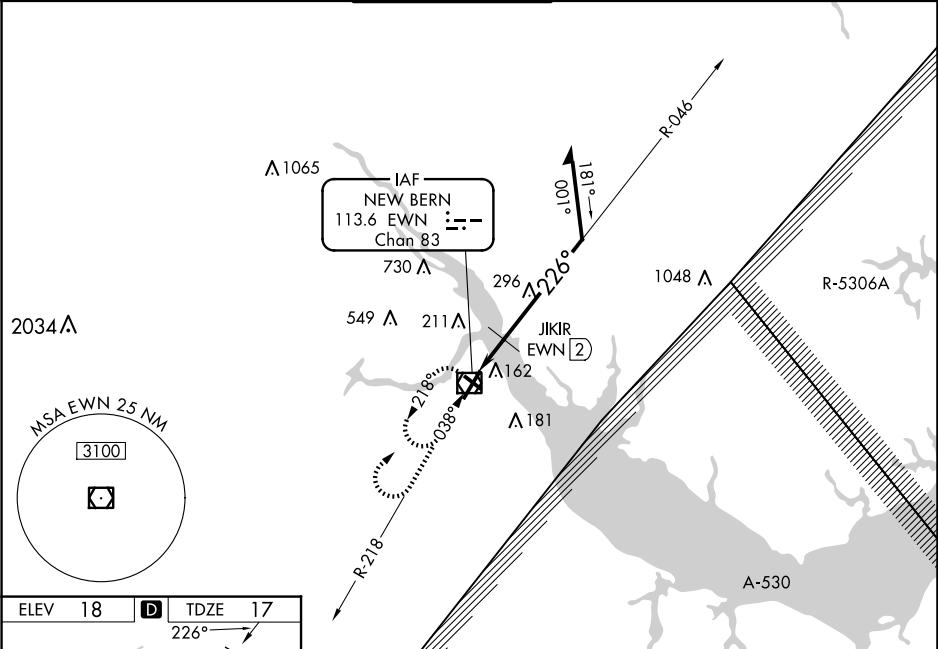
Rwy 14, 32 helicopter visibility reduction below 1 SM NA. Rwy 22 helicopter visibility reduction below ¾ SM NA. Circling Rwy 14, 32 NA at night. JIKIR fix minimums:

⚠

S-22 Cat D minimums NA when using Cherry Point altimeter setting. When local altimeter setting not received, use Cherry Point altimeter setting and increase all MDAs 40 feet and Circling Cat D visibility ¼ SM and JIKIR fix minimums Circling Cat C/D visibility ¼ SM.

MISSED APPROACH: Climb to 1000 then climbing right turn to 2000 direct EWN VOR/ DME and hold, continue climb-in-hold to 2000.

ASOS	CHERRY POINT APP CON	NEW BERN TOWER ★	GND CON	CLNC DEL	CLNC DEL
118.525	119.35 374.9	124.25 (CTAF) 0	121.7	121.7	120.525 (when twr closed)



1000	2000	EWN	EWN VOR/DME	6000	046°	1800	226°	600*	2 NM	Remain within 10 NM
VGSI and descent angles not coincident (VGSI Angle 3.00/TCH 31).										
*640 when using Cherry Point altimeter setting.										
JIKIR EWN 2										
TCH 55										
3.42°										
600*										
2 NM										
CATEGORY	A	B	C	D						
S-22	600-1	583 (600-1)	600-1 ¾	583 (600-1 ¾)						
CIRCLING	600-1	582 (600-1)	600-1 ¾	860-2 ¾	582 (600-1 ¾)	842 (900-2 ¾)				
JIKIR FIX MINIMUMS (DME REQUIRED)										
S-22	480-1	463 (500-1)	480-1 ¾	463 (500-1 ¾)						
CIRCLING	480-1	520-1	600-1 ½	860-2 ¾	462 (500-1)	502 (600-1)	582 (600-1 ½)	842 (900-2 ¾)		