

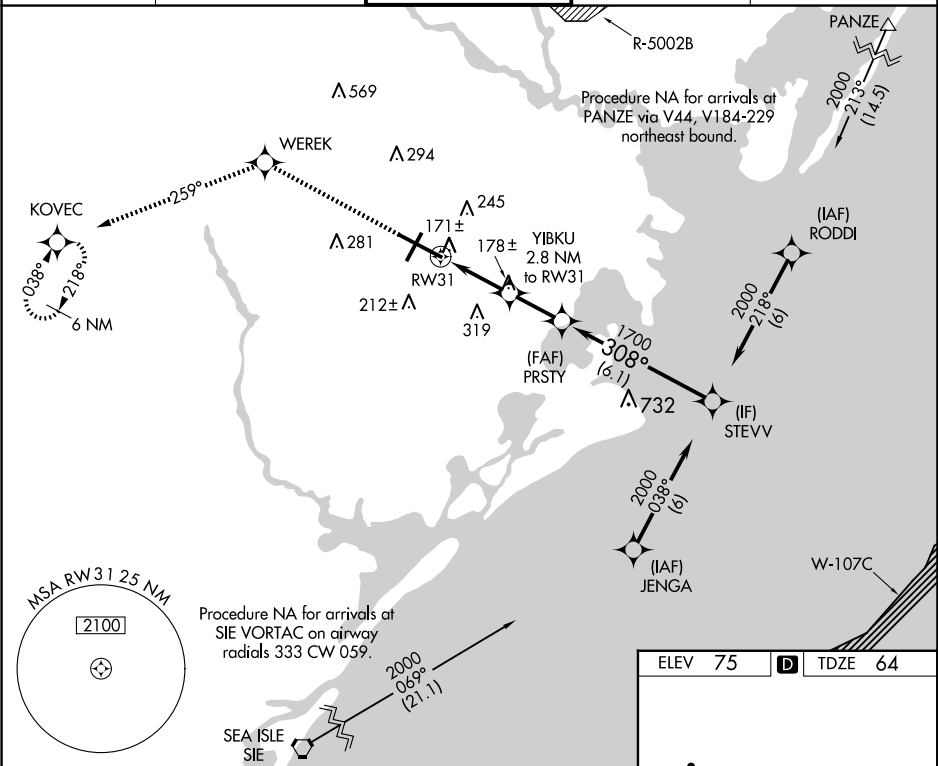
WAAS CH <b>50113</b> <b>W31A</b>	APP CRS <b>308°</b>	Rwy Idg TDZE Apt Elev	<b>10001</b> <b>64</b> <b>75</b>
--	------------------------	-----------------------------	--

RNAV (GPS) Y RWY 31

ATLANTIC CITY INTL (ACY)

RNP APCH - GPS.	MISSED APPROACH: Climb to 2000 direct WEREK and on track 259° to KOVEC and hold.
<div><div>▼</div><div>▲</div></div> For uncompensated Baro-VNAV systems, LNAV/VNAV NA below -15°C or above 48°C.	

ATIS <b>125.725 316.15</b>	ATLANTIC CITY APP CON <b>124.6 327.125</b>	ATLANTIC CITY TOWER <b>120.3 239.0</b>	GND CON <b>121.9 284.6</b>	CLNC DEL <b>127.85 353.775</b>
-------------------------------	---	---	-------------------------------	-----------------------------------



2000	WEREK	tr 259°	KOVEC	VGSI and RNAV glidepath not coincident (VGSI Angle 3.00/TCH 69°).	STEVV	2000
				PRSTY 1700		
				YIBKU 2.8 NM to RW31		
				1 NM to RW31		
				RW31		
				1000		
				1700		
				1 NM	1.8 NM	2.1 NM
				6.1 NM		
CATEGORY	A	B	C	D	E	
LPV DA	264/40	200 (200-¾)				
LNAV/VNAV DA	422/60	358 (400-1¼)				
LNAV MDA	441/55	377 (400-1)	441/60	377 (400-1¼)		
CIRCLING	540-1 465 (500-1)	600-1 525 (600-1)	620-1½ 545 (600-1½)	640-2 565 (600-2)	760-2½ 685 (700-2½)	

