

APP CRS	Rwy ldg	10001
308°	TDZE	63
	Apt Elev	75

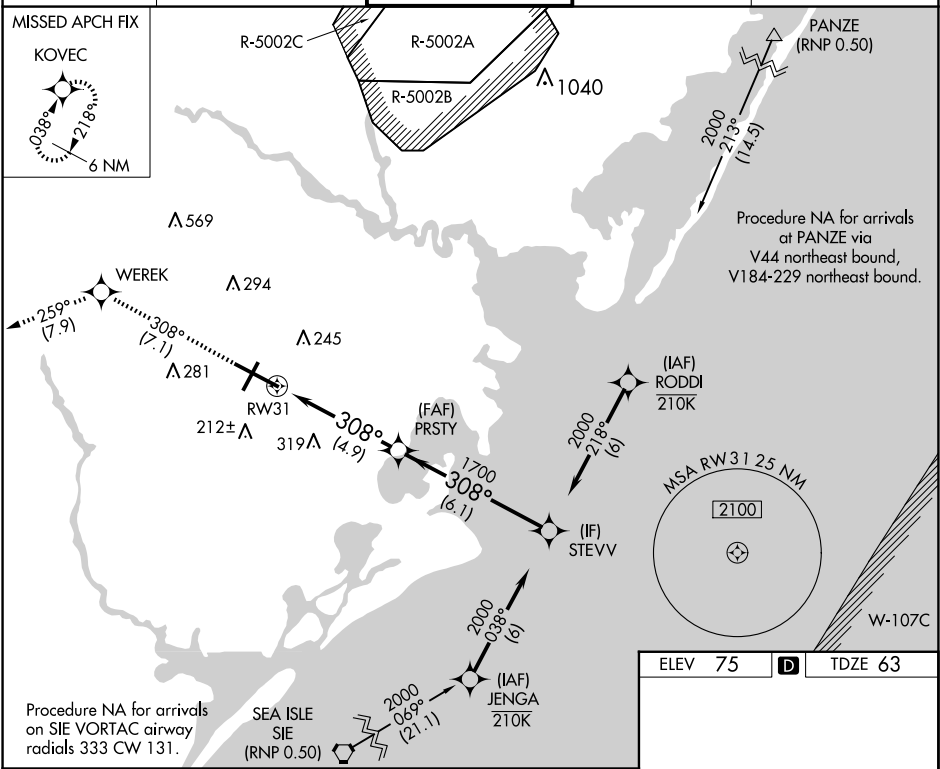
RNAV (RNP) Z RWY 31

ATLANTIC CITY INTL (ACY)

GPS Required. Procedure NA at night.  
For uncompensated Baro-VNAV systems, procedure NA below -13°C (8°F) or above 54°C (130°F).

MISSED APPROACH: Climb to 2000 on track 308° to WEREK on track 259° to KOVEC and hold.

ATIS	ATLANTIC CITY APP CON	ATLANTIC CITY TOWER	GND CON	CLNC DEL
125.725 316.15	124.6 327.125	120.3 239.0	121.9 284.6	127.85 353.775



2000

↑

tr

308°

WEREK

tr

259°

KOVEC

Procedure Turn NA

VGSI and RNAV glidepath not coincident (VGSI Angle 3.00/TCH 69°).

STEVV

2000

RW31

1700

PRSTY

1700

GP 3.00°

TCH 52

CATEGORY

A

B

C

D

RNP 0.30 DA

408/60

345 (400-1¼)

AUTHORIZATION REQUIRED

TDZ/CL Rwy 13

HIRL Rwy 4-22 and 13-31

REIL Rwy 31