


WAAS CH 53631 W22A	APP CRS 218°	Rwy Idg 6145 TDZE 68 Apt Elev 75
--	------------------------	---

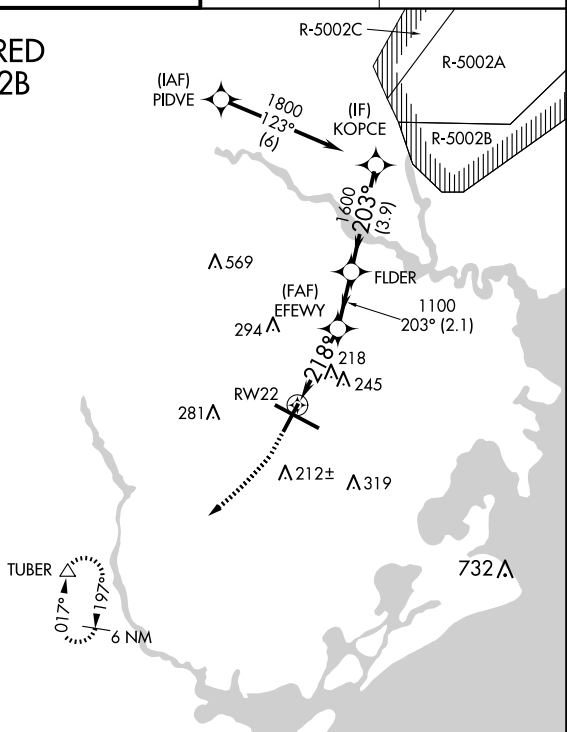
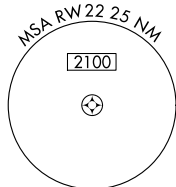
RNAV (GPS) RWY 22
ATLANTIC CITY INTL (ACY)

RNP APCH - GPS.				MISSED APPROACH: Climb to 600 then climbing right turn to 2000 direct TUBER and hold.					
For uncompensated Baro-VNAV systems, LNAV/VNAV NA below -1.4°C (7°F) or above 54°C (130°F). Rwy 22 helicopter visibility reduction below ¾ SM NA.									
ATIS 125.725 316.15		ATLANTIC CITY APP CON 124.6 327.125		ATLANTIC CITY TOWER 120.3 239.0		GND CON 121.9 284.6		CLNC DEL 127.85 353.775	

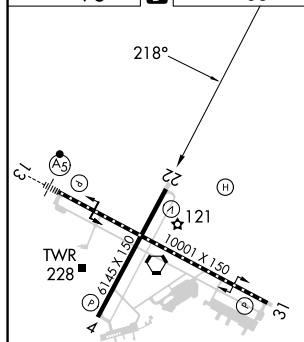
**RADAR REQUIRED
WHEN R-5002B
IS ACTIVE.**

CEDAR LAKE VCN  1800
077°
(16.8)

Procedure NA for arrival on VCN VORTAC
airway radials 066 CW 160.



ELEV 75	D	TDZE 68
---------	----------	---------



TDZ/CL Rwy 13
HIRL Rwys 4-22 and 13-31
REIL Rwy 31

ATLANTIC CITY, NEW JERSEY
Amdt 4C 09SEP21

39°27'N-74°35'W

ATLANTIC CITY INTL (ACY)
RNAV (GPS) RWY 22

NE-2, 10 JUL 2025 to 07 AUG 2025

600 ↑		2000 ↗		TUBER △							
* LNAV only.											
<p>RW22 *1.3 NM to RW22 218° EFWY 1100 FLDER 203° 1800 1600 GP 3.00° TCH 5T 1.3 NM 1.8 NM 2.1 NM 3.9 NM</p>											
CATEGORY		A		B		C		D		E	
LPV DA		364-1 296 (300-1)									
LNAV/VNAV DA		356-7/8 288 (300-7/8)									
LNAV MDA		520-1 452 (500-1)				520-1 1/8 452 (500-1 1/8)					
CIRCLING		540-1 465 (500-1)		600-1 525 (600-1)		620-1 1/2 545 (600-1 1/2)		640-2 565 (600-2)		760-2 1/2 685 (700-2 1/2)	