

## HI-VOR or TACAN RWY 31

VORTAC ACY <b>117.15</b> Chan <b>118(Y)</b>	APCH CRS <b>302°</b>	Rwy Idg <b>10,001</b> TDZE <b>64</b> Arpt Elev <b>75</b>
---	-------------------------	--

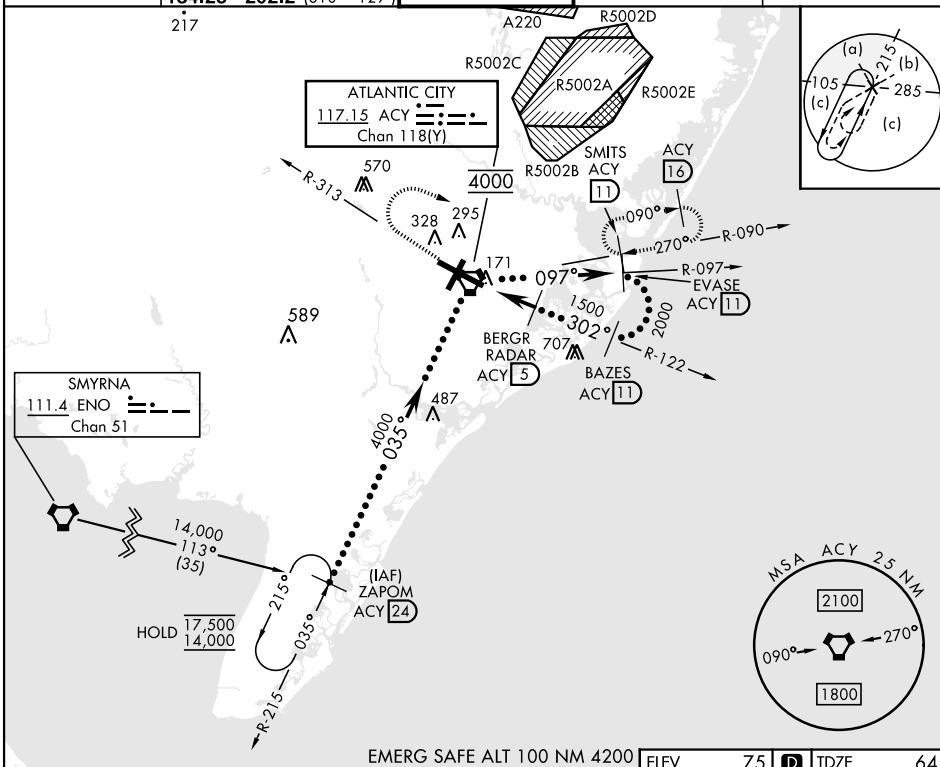
[USAF]

ATLANTIC CITY INTL (KACY)

DME or RADAR required
-----------------------

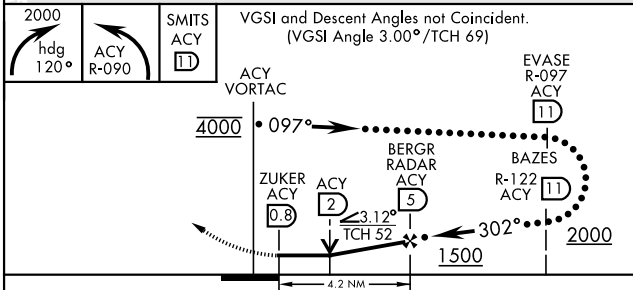
**MISSED APPROACH:** Climbing right turn to 2000 on heading 120° and on ACY R-090 to SMITS/ACY 11 DME and hold.

ATIS		APP CON		TOWER		GND CON		CLNC DEL	
125.725	316.15	124.6	327.125 (130° - 309°)	120.3	239.0	121.9	284.6	127.85	353.775
		134.25	292.2 (310° - 129°)						

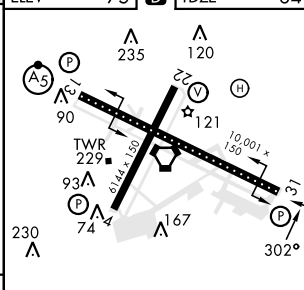


EMERG SAFE ALT 100 NM 4200

ELEV	75	<b>D</b>	TDZE	64
------	----	----------	------	----



CATEGORY	C	D	E
S-31	500-1 ¼ 436 (500-1 ¼)		
CIRCLING	620-1½ 545 (600-1½)	640-2 565 (600-2)	760-2½ 685 (700-2½)



REIL Rwy 31  
HIRL Rwy 4-22 and 13-31  
TDZL/CL Rwy 13

ATLANTIC CITY, NEW JERSEY

39°27'N-74°35'W

ATLANTIC CITY INTL (KACY)

Amdt 4C 25JAN24

## HI-VOR or TACAN RWY 31

NE-2, 10 JUL 2025 to 07 AUG 2025

NE-2, 10 JUL 2025 to 07 AUG 2025