

HI-ILS Y or LOC Y RWY 13

LOC/DME I-PVO	APCH CRS	Rwy Idg
109.1	128°	10,001
Chan 28	TDZE	75
	Arprt Elev	75

[USAF]

ATLANTIC CITY INTL (KACY)

DME or RADAR required

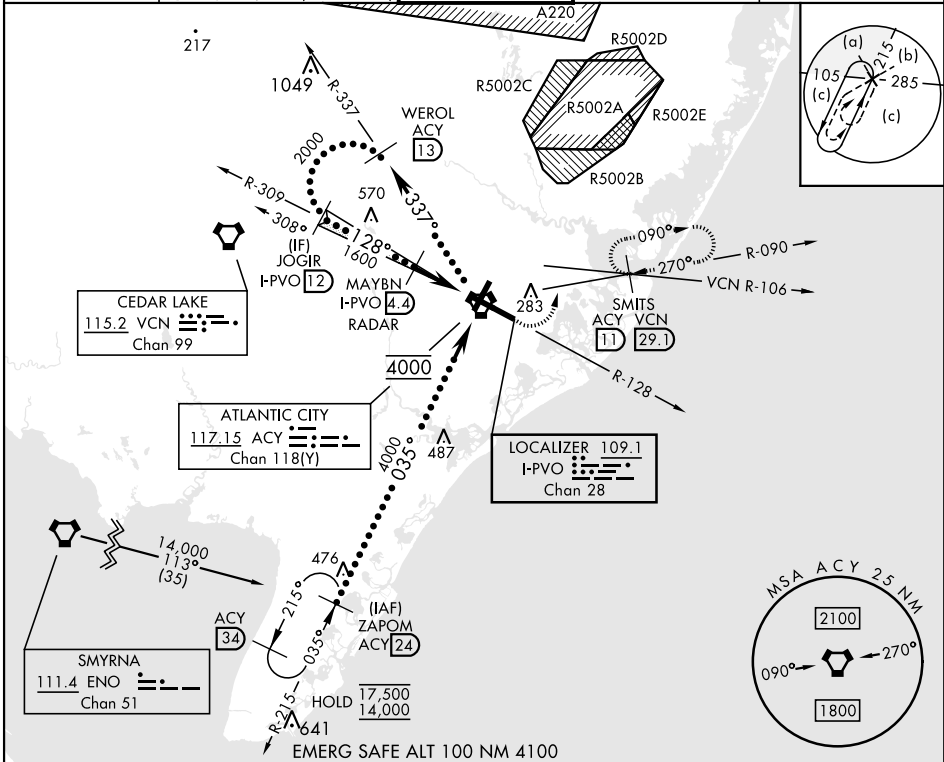
When ALS inop, increase RVR to 40 and vis to 3/4 mile.  
When ALS inop, increase vis to 1 3/8 miles.

MALSR



MISSED APPROACH: Climb to 600 then climbing left turn to 2000 on ACY R-090 to SMITS/ACY 11 DME and hold.

ATIS	APP CON	TOWER	GND CON	CLNC DEL
125.725 316.15	124.6 327.125 (130° - 309°) 134.25 292.2 (310° - 129°)	120.3 239.0	121.9 284.6	127.85 353.775



Use I-PVO DME when on the LOC course. VGSI and ILS glidepath not coincident (VGSI Angle 3.00/TCH 71).		ELEV 75 TDZE 75	
WEROL ACY 13 MAYBN I-PVO 4.4 JOGIR I-PVO 12 RADAR ACI 34 ZAPOM ACY 24 SMITS ACY 11 LOCALIZER 109.1 I-PVO Chan 28		REIL Rwy 31 HIRL Rwy 4-22 and 13-31 TDZL/CL Rwy 13	
CATEGORY C D E		FAF to MAP 4.6 NM	
S-ILS 13 * 275/18 200 (200-1/2)		Knots 120 140 160 180 200	
S-LOC 13 ** 520/45 445 (500-7/8)		Min:Sec 2:18 1:58 1:43 1:32 1:23	
CIRCLING 620-1 1/2 545 (600-1 1/2) 640-2 565 (600-2) 760-2 1/2 685 (700-2 1/2)			

HI-ILS Y or LOC Y RWY 13