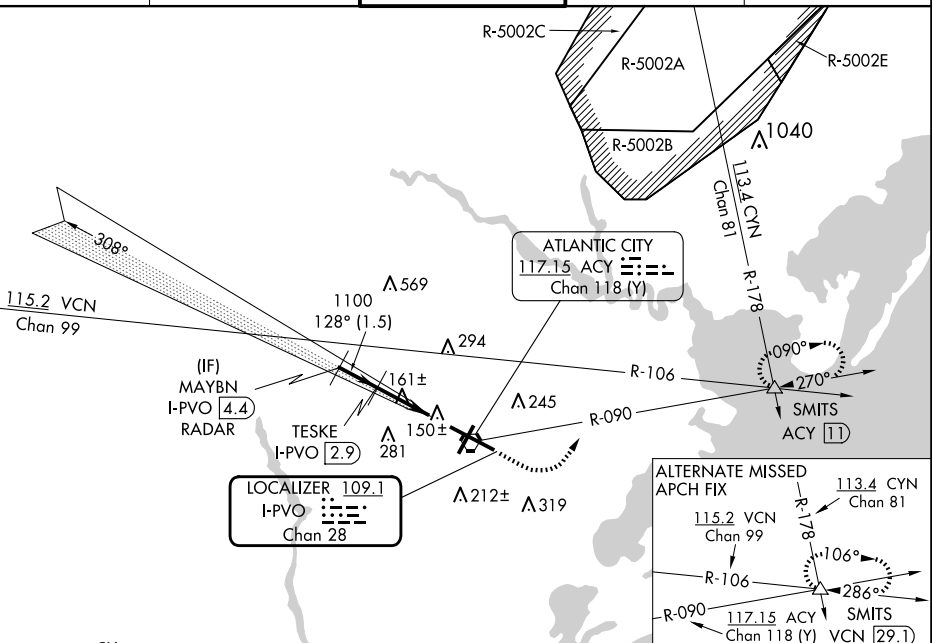


COPTER ILS or LOC/DME RWY 13
ATLANTIC CITY INTL (ACY)

MALSR

MISSED APPROACH: Climb to 600 then climbing left turn to 2000 via ACY R-090 to SMITS INT/ACY 11 DME and hold.

ATIS	ATLANTIC CITY APP CON	ATLANTIC CITY TOWER	GND CON	CLNC DEL
125.725 316.15	124.6 327.125	120.3 239.0	121.9 284.6	127.85 353.775



ALTERNATE MISSED
APCH FIX

115.2 VCN
Chan 99

R-106

117.15 ACY
Chan 118 (Y)

R-090

113.4 CYN
Chan 81

106°

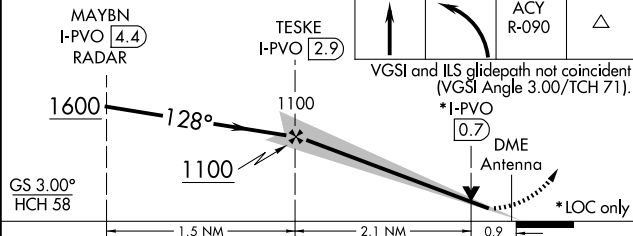
286°

SMITS
VCN 29.1

ELEV 75	D	TDZE 75
---------	----------	---------

RADAR REQUIRED

Use I-PVO DME when on the localizer course.



CATEGORY	COPTER	FAF to MAP 3 NM					
H-ILS 13	275/12 200 (200-½)	Knots	45	60	75	90	105
H-LOC 13	420/24 345 (400-½)	Min:Sec	4:00	3:00	2:24	2:00	1:43

39°27'N-74°35'W

ATLANTIC CITY INTL (ACY)

COPTER ILS or LOC/DME RWY 13

NE-2, 10 JUL 2025 to 07 AUG 2025

NE-2, 10 JUL 2025 to 07 AUG 2025