

WAAS CH 40411 W17A	APP CRS 168°	Rwy Ldg 10000 TDZE 5708 Apt Elev 5759
--	------------------------	--

RNAV (GPS) RWY 17
MONTROSE RGNL (MTJ)

RNP APCH - GPS.

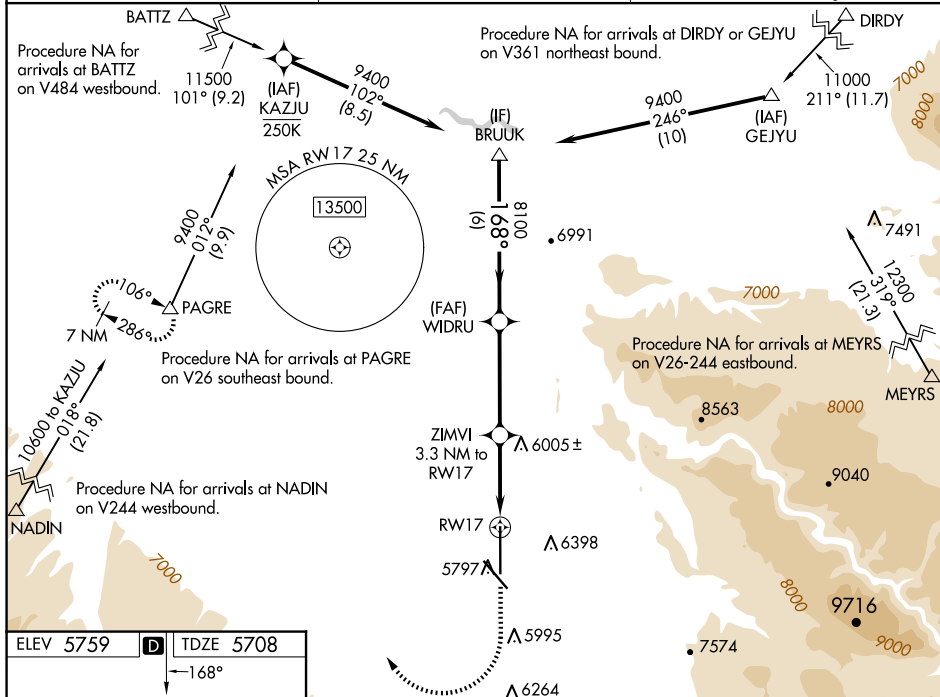
T Circling NA east of Rwy 17 and northeast of Rwy 31. Circling
A Rwy 31 NA at night. When Circling to Rwy 13 at night,
operational VGSI required, remain on or above VGSI glidepath
until threshold. Baro-VNAV NA.

MALSR

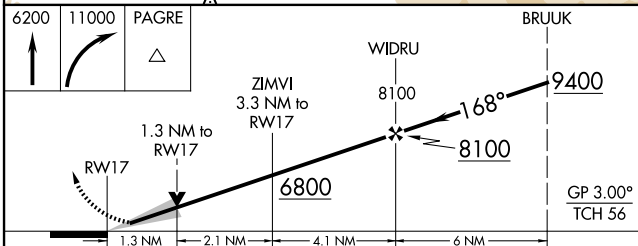
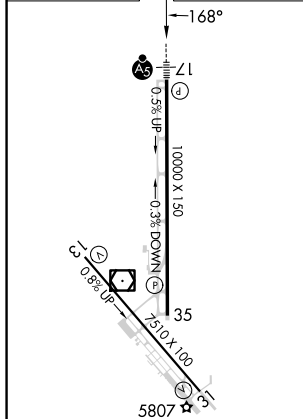



MISSED APPROACH: (Do not exceed 250K until PAGRE) Climb to 6200 then climbing right turn to 11000 direct PAGRE and hold, continue climb in hold to 11000.

ASOS 135.225	DENVER CENTER 127.1 343.65	UNICOM 122.8 (CTAF) 0
------------------------	--------------------------------------	---------------------------------



ELEV 5759	D	TDZE 5708
-----------	----------	-----------



CATEGORY		A	B	C	D
LPV	DA	5908-1/2 200 (200-1/2)			
LNAV/ VNAV	DA	6136-3/4 428 (400-3/4)			
LNAV	MDA	6160-1/2 452 (500-1/2)		6160-3/4 452 (500-3/4)	
 CIRCLING		6280-1 521 (600-1)	6320-1 561 (600-1)	6420-13/4 661 (700-13/4)	6800-3 1041 (1100-3)

MONTROSE, COLORADO

Amdt 1A 12JUN25

38°31'N-107°54'W

MONTROSE RGNL (MTJ)

RNAV (GPS) RWY 17

SW-1, 10 JUL 2025 to 07 AUG 2025

SW-1, 10 JUL 2025 to 07 AUG 2025