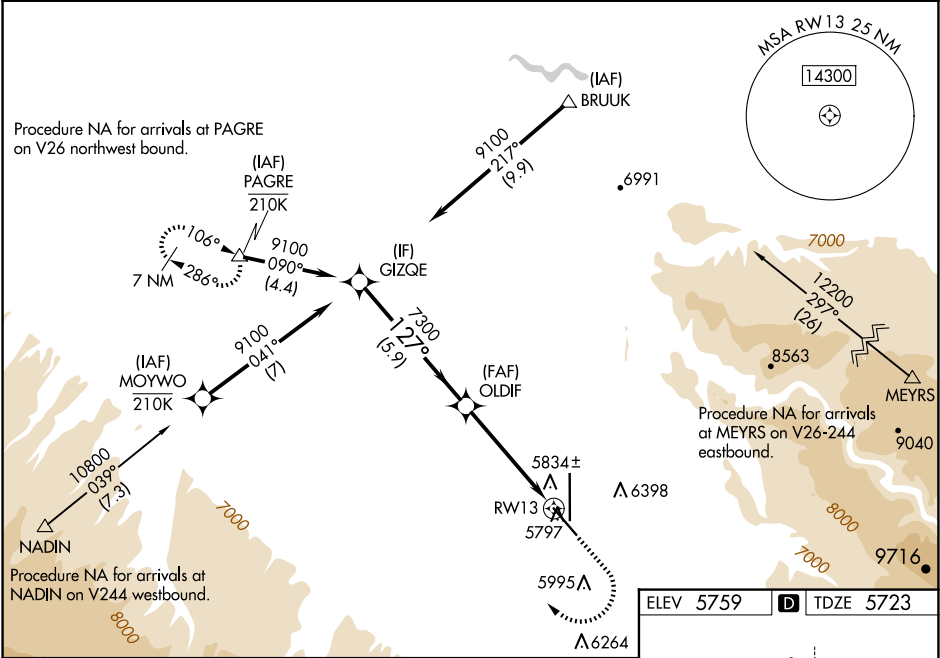


WAAS CH <b>97344</b> <b>W13A</b>	APP CRS <b>127°</b>	Rwy Ldg TDZE Apt Elev	<b>7510</b> <b>5723</b> <b>5759</b>
--	------------------------	-----------------------------	---

RNAV (GPS) RWY 13  
MONTROSE RGNL (MTJ)

RNP APCH - GPS.	<p>                     MISSED APPROACH: (Do not exceed 200K until PAGRE) Climb to 6300 (6440 when using AJZ altimeter setting) then climbing right turn to 11000 direct PAGRE and hold, continue climb-in-hold to 11000.                 </p>
<p>                     Rwy 13 helicopter visibility reduction below 1 SM NA. Circling NA east of Rwy 17 and northeast of Rwy 31. Circling Rwy 31 NA at night. For uncompensated Baro-VNAV systems, LNAV/VNAV NA below -19°C or above 54°C. Straight-in/Circling Rwy 13 at night, operational VGSI required, remain on or above VGSI glidepath until threshold.                 </p>	

ASOS <b>135.225</b>	DENVER CENTER <b>127.1 343.65</b>	UNICOM <b>122.8 (CTAF) 0</b>
------------------------	--------------------------------------	---------------------------------



VGSI and RNAV glidepath not coincident (VGSI Angle 3.00/TCH 43).				
GIZQE OLDIF RW13				
GP 3.00° TCH 55				
9100 7300 7300 7300				
5.9 NM 4.9 NM				
CATEGORY	A	B	C	D
LPV DA	5973-1 250 (300-1)			
LNAV/VNAV DA	6101-1 378 (400-1)			
LNAV MDA	6160-1 437 (500-1)	6160-1¼ 437 (500-1¼)		
CIRCLING	6280-1 521 (600-1)	6320-1 561 (600-1)	6420-1¾ 661 (700-1¾)	6800-3 1041 (1100-3)

