

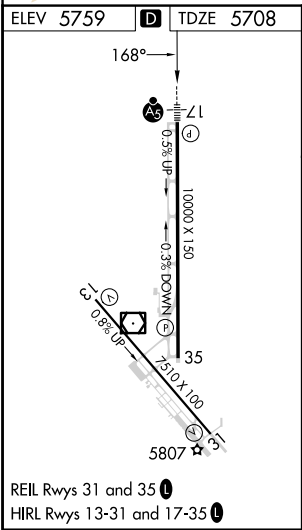
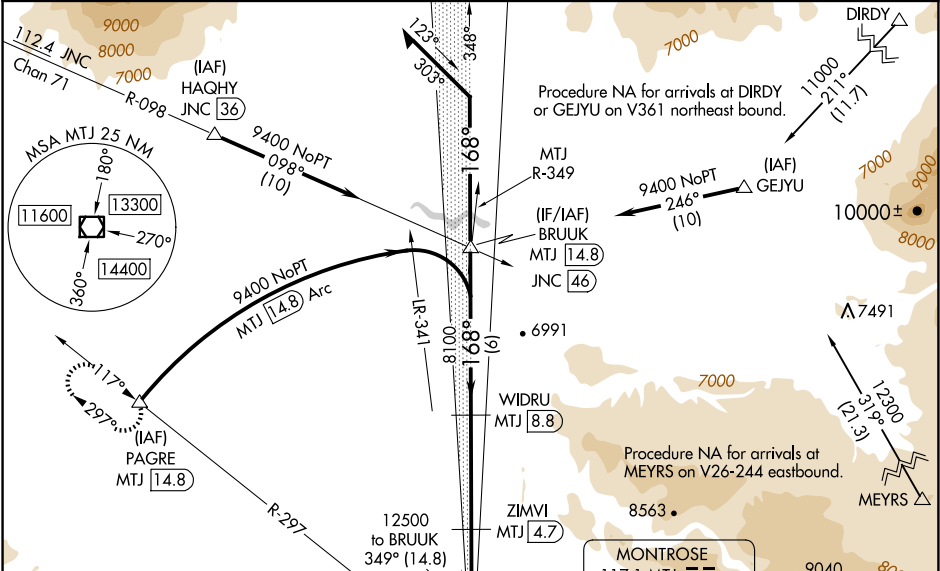
LOC I-MTJ	APP CRS	Rwy Ldg	10000
111.3	168°	TDZE	5708
		Apt Elev	5759

ILS or LOC RWY 17

MONTROSE RGNL (MTJ)

RNP APCH - GPS. From DIRDY, MYERS, GEJYU.	MISSED APPROACH: Climb to 6300 then climbing right turn to 11000 on heading 325° and MTJ VOR/DME R-297 to PAGRE/ MTJ 14.8 DME and hold, continue climb-in-hold to 11000.
DME required.	MALSR
Circling NA east of Rwy 17 and northeast of Rwy 31. Circling Rwy 31 NA at night. When Circling Rwy 13 at night, operational VGSi required, remain on or above VGSi glidepath until threshold. DME from MTJ VOR/DME. DME use requires simultaneous reception of I-MTJ and MTJ. For inop ALS, increase S-LOC 17 Cat C/D visibility to 7/5 SM.	

ASOS 135,225	DENVER CENTER 127.1 343.65	UNICOM 122.8(CTAF)
-----------------	-------------------------------	-----------------------



ELEV 5759 TDZE 5708	168°	12500	9400	8100	6800	6300	11000	MTJ R-297	PAGRE
GS 3.00° TCH 56	348°	12500	9400	8100	6800	6300	11000	MTJ R-297	PAGRE
CATEGORY	A	B	C	D	6 NM	4.1 NM	2.4 NM	0.9	0.9
S-ILS 17	5908-1/2	200 (200-1/2)	312 (300-1/2)	1041 (1100-3)	6280-1	6320-1	6420-1 3/4	6800-3	1041 (1100-3)
S-LOC 17	6020-1/2	312 (300-1/2)	1041 (1100-3)	1041 (1100-3)	6280-1	6320-1	6420-1 3/4	6800-3	1041 (1100-3)
CIRCLING	6280-1	6320-1	6420-1 3/4	6800-3	521 (600-1)	561 (600-1)	661 (700-1 3/4)	1041 (1100-3)	1041 (1100-3)