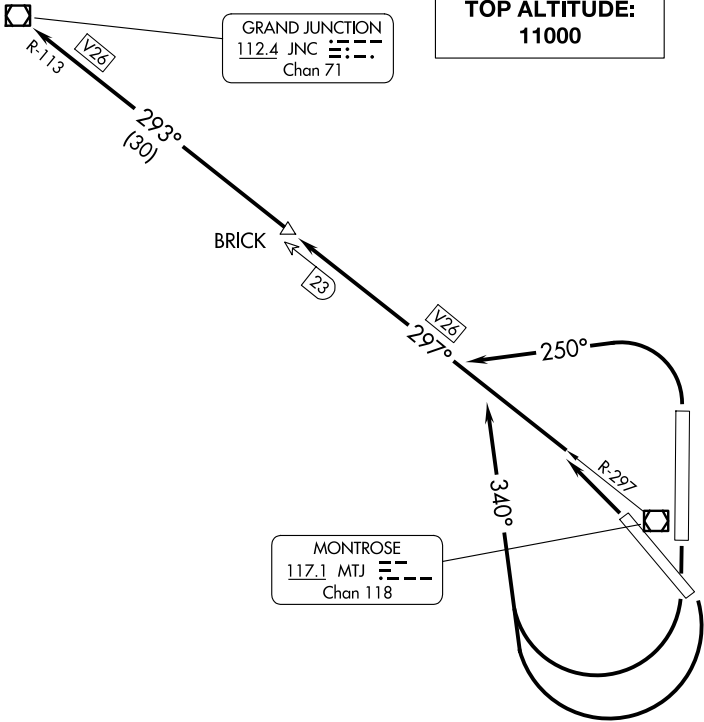


DENVER CENTER  
127.1 343.65  
UNICOM  
122.8

TOP ALTITUDE:  
11000



NOTE: DME required.

TAKEOFF MINIMUMS

Rwy 13: Standard with minimum climb of 250' per NM to 7900.  
Rwy 17: Standard with minimum climb of 260' per NM to 7800.  
Rwys 31, 35: Standard.

NOTE: Chart not to scale.



DEPARTURE ROUTE DESCRIPTION

TAKEOFF RUNWAYS 13, 17: Climbing right turn to 11000 on heading 340° and MTJ R-297 to BRICK/MTJ 23 DME, thence . . .

TAKEOFF RUNWAY 31: Climbing left turn to 11000 on MTJ R-297 to BRICK/MTJ 23 DME, thence . . .

TAKEOFF RUNWAY 35: Climbing left turn to 11000 on heading 250° and MTJ R-297 to BRICK/MTJ 23 DME, thence . . .

. . . on V26 to JNC VOR/DME.