

VOR/DME MCW	APP CRS	Rwy Ldg	6401
114.9	356°	TDZE	1193
Chan 96		Apt Elev	1213

VOR RWY 36  
MASON CITY MUNI (MCW)

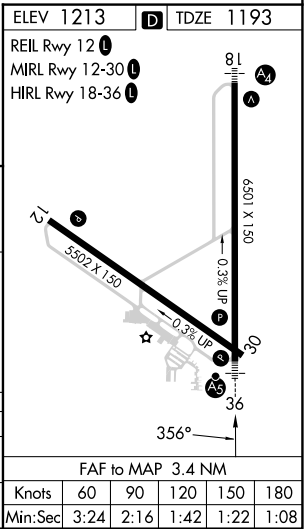
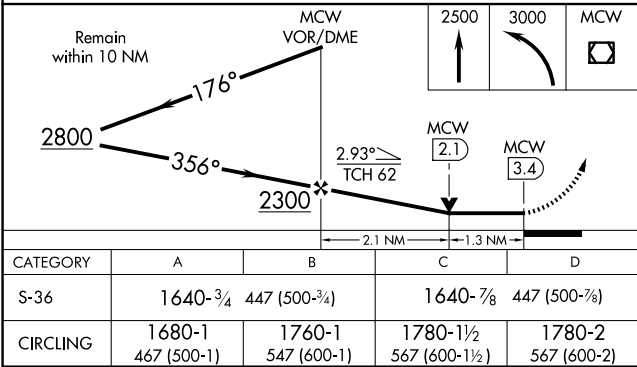
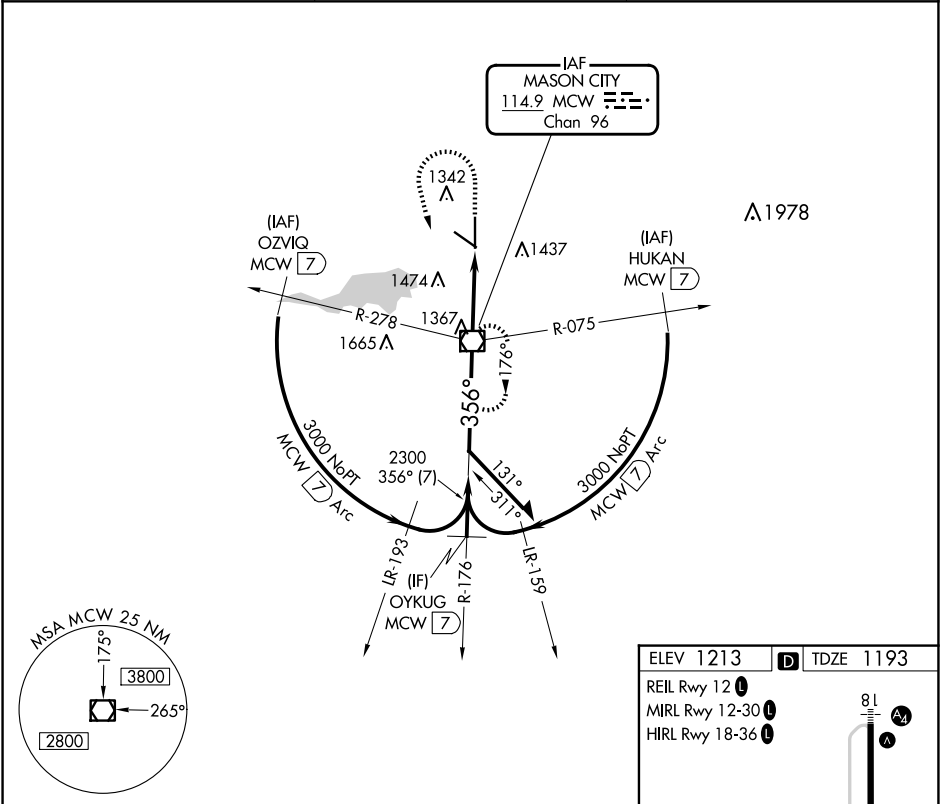
**V** VDP NA when using Charles City altimeter setting. When local altimeter setting not received, use Charles City altimeter setting and increase all MDA 100 feet and increase S-36 Cat C/D and Circling Cat C visibility ¼ mile.

**A**

**MALSR**

**MISSED APPROACH:** Climb to 2500 then climbing left turn to 3000 direct MCW VOR/DME and hold.

ASOS 120.3	MINNEAPOLIS CENTER 127.3 257.675	UNICOM 123.0 (CTAF) <b>0</b>
---------------	-------------------------------------	---------------------------------



NC-3, 10 JUL 2025 to 07 AUG 2025

NC-3, 10 JUL 2025 to 07 AUG 2025