

WAAS CH 40100 W18A	APP CRS 180°	Rwy Ldg TDZE 1213 Apt Elev 1213
--	------------------------	---

RNAV (GPS) RWY 18

MASON CITY MUNI (MCW)

RNP APCH-GPS.

▼

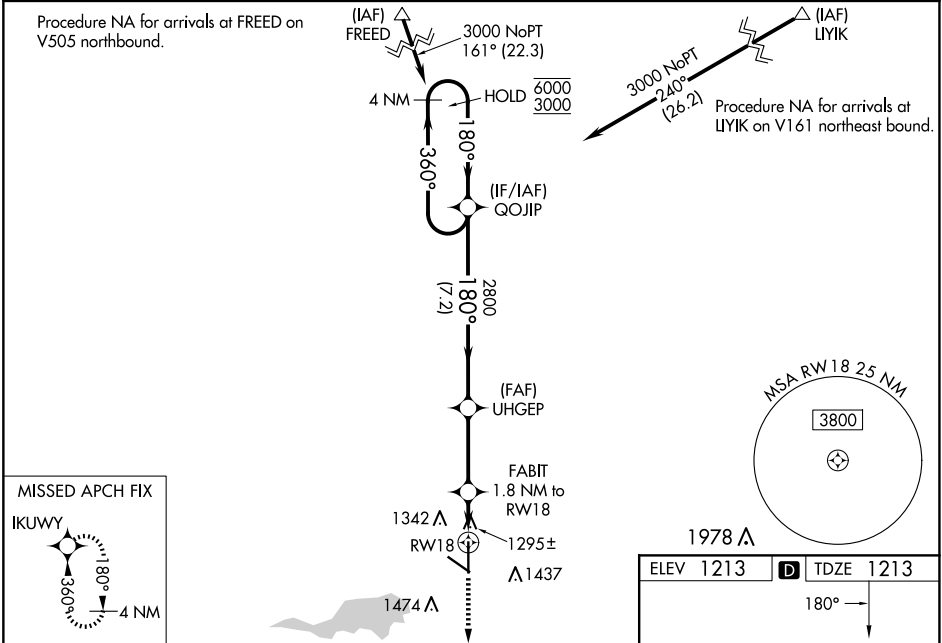
▲

Baro-VNAV and VDP NA when using Charles City altimeter setting. For uncompensated Baro-VNAV systems, LNAV/VNAV NA below -17°C or above 54°C. Inop table does not apply to LPV and LNAV/VNAV. When local altimeter setting not received, use Charles City altimeter setting and increase LPV DA to 1500 feet, LNAV/VNAV DA to 1550; increase all MDA 100 feet and LNAV Cats C and D visibility ¼ SM and Circling Cat C ¼ SM. For inop ALS when using Charles City altimeter setting, increase LPV all Cats visibility to ½ SM; LNAV Cats C/D visibility to 1 ½ SM.

MALS

MISSED APPROACH:
Climb to 3000 direct
IKUWY and hold.

ASOS 120.3	MINNEAPOLIS CENTER 127.3 257.675	UNICOM 123.0 (CTAF) 0
----------------------	--	---------------------------------



4 NM Holding Pattern

GP 3.00° TCH 55

6000 3000

360° 180°

2800

7.2 NM 3 NM 0.8 1 NM

VGSI and RNAV glidepath not coincident (VGSI Angle 3.00/TCH 39).

UHGEP FABIT 1.8 NM to RW18

*1840

*LNAV only

CATEGORY	A	B	C	D
LPV DA		1413-¾	200 (200-¾)	
LNAV/VNAV DA		1463-¾	250 (300-¾)	
LNAV MDA		1560-¾	347 (400-¾)	
CIRCLING	1680-1 467 (500-1)	1760-1 547 (600-1)	1780-1½ 567 (600-1½)	1780-2 567 (600-2)

ELEV 1213 D TDZE 1213

180°

81 A2

4501 X 150

0.3% UP

0.3% UP

36

REIL Rwy 12 0

MIRL Rwy 12-30 0

HIRL Rwy 18-36 0