

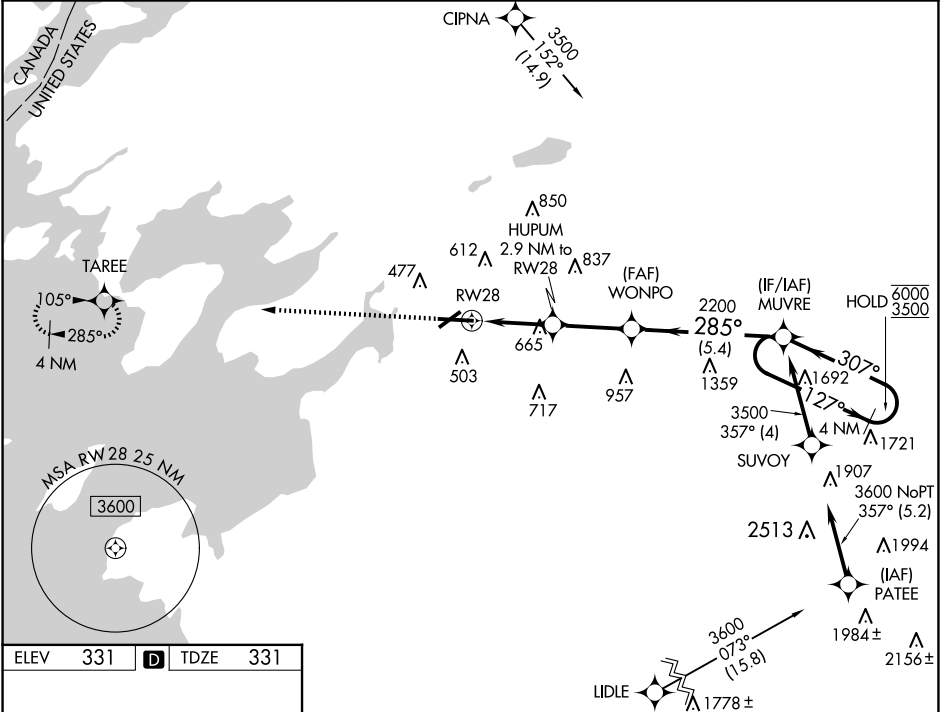
WAAS CH 82322 W28A	APP CRS 285°	Rwy Ldg TDZE Apt Elev	7001 331 331
--	------------------------	-----------------------------	---

RNAV (GPS) RWY 28

WATERTOWN INTL (ART)

RNP APCH - GPS.		MALSR	MISSED APPROACH: Climb to 2400 direct TAREE and hold.
Rwy 28 helicopter visibility reduction below ¾ SM NA. For uncompensated Baro-VNAV systems, LNAV/VNAV NA below -20°C or above 54°C. For inop ALS, increase LNAV Cats A/B visibility to 1 SM.			

ASOS 132.325	KGTB ATIS 119.525	WHEELER-SACK APP CON 124.875 307.125	CLNC DEL 120.8	UNICOM 123.0 (CTAF) 0
------------------------	-----------------------------	--	--------------------------	---------------------------------



ELEV 331	D	TDZE 331
----------	----------	----------

