

WAAS CH 93709 W30A	APP CRS 304°	Rwy Idg 5914 TDZE 155 Apt Elev 155
--	------------------------	---

RNAV (GPS) RWY 30
MERCED YOSEMITE RGNL (MCE)

RNP APCH.

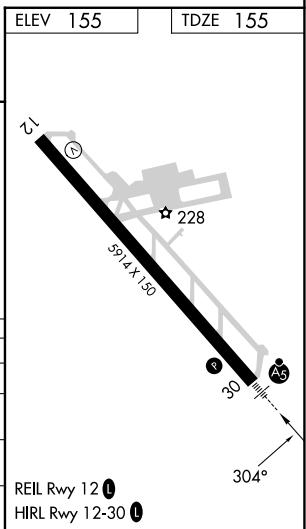
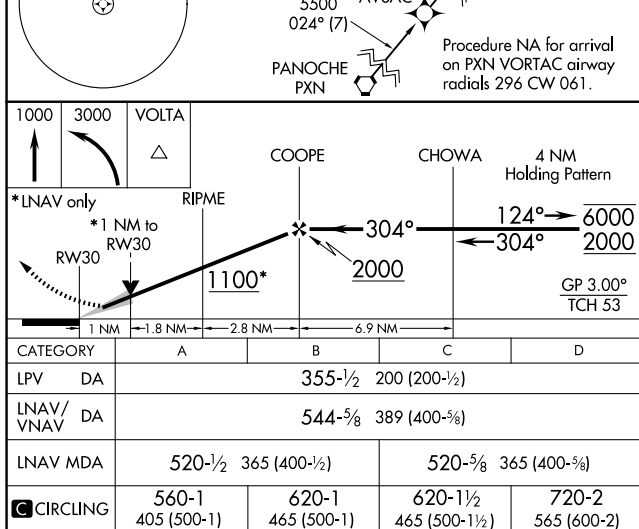
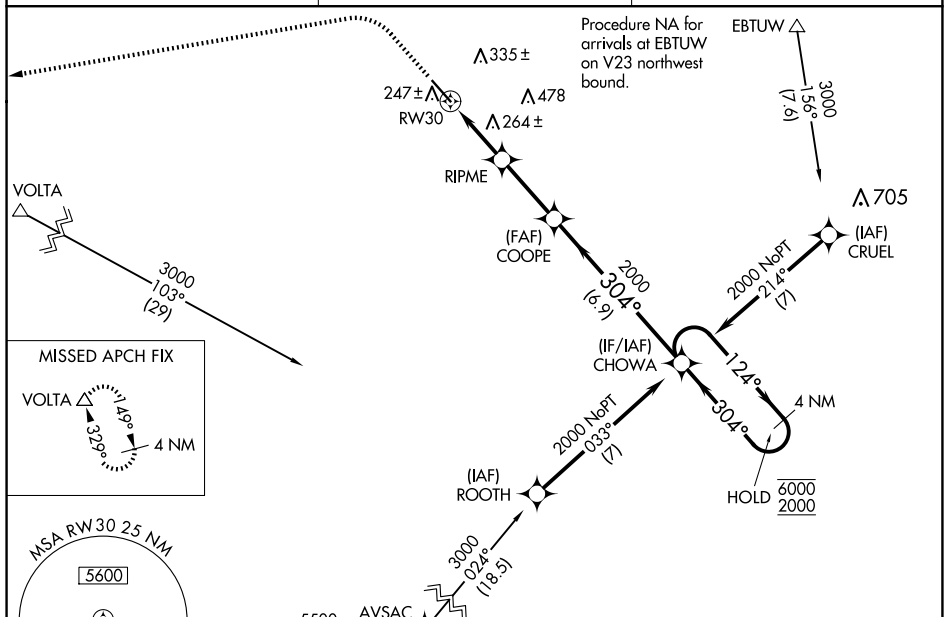
T For uncompensated Baro-VNAV systems, LNAV/VNAV NA below -3°C or above 54°C. For inoperative ALS, increase LNAV Cats C/D visibility to 1 3/8 SM. Circling NA northeast of Rwy 12-30.

MALSR



MISSED APPROACH: Climb to 1000 then climbing left turn to 3000 direct VOLTA and hold.

ASOS 132.175	NORCAL APP CON 120.95 269.45	UNICOM 122.7 (CTAF) 0
------------------------	--	---------------------------------



RNAV (GPS) RWY 30