

WAAS CH 93923 W12A	APP CRS 123°	Rwy Idg 5914 TDZE 155 Apt Elev 155
--	------------------------	---

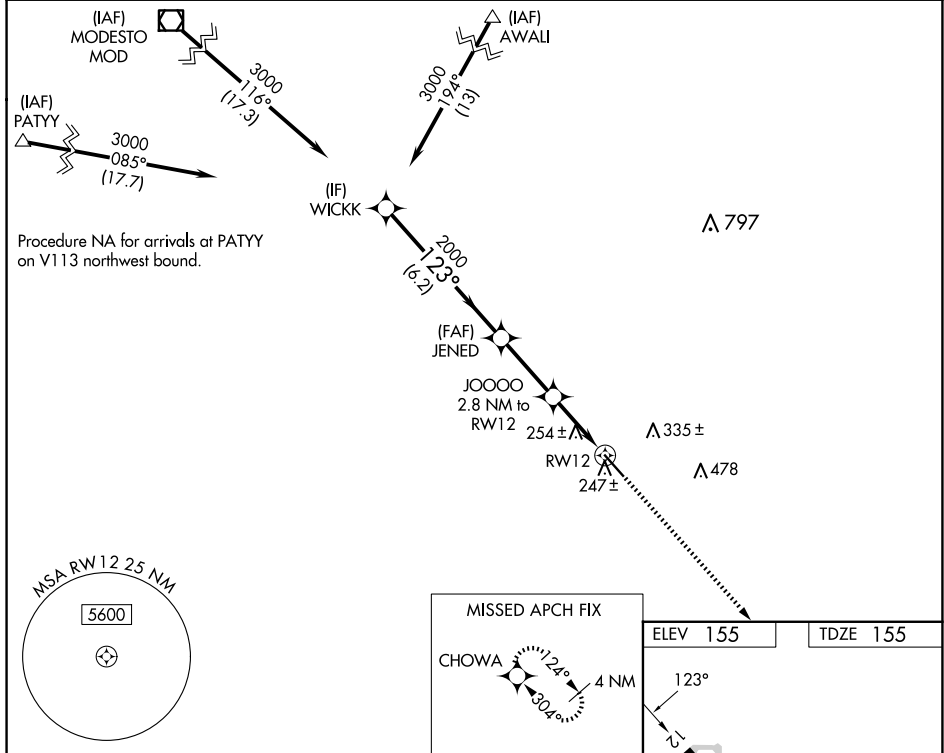
RNAV (GPS) RWY 12
MERCED YOSEMITE RGNL (MCE)

RNP APCH.

T Rwy 12 helicopter visibility reduction below $\frac{3}{4}$ SM NA. For uncompensated Baro-VNAV systems, LNAV/VNAV NA below -3°C or above 54°C .

MISSED APPROACH: Climb to 3600
direct CHOWA and hold.

ASOS 132.175	NORCAL APP CON 120.95 269.45	UNICOM 122.7 (CTAF) 0
------------------------	--	---------------------------------



The diagram illustrates a flight path starting from a point labeled 'WICK' and heading towards 'CHOWA'. The path is divided into segments by various navigation aids and distances. Key features include:

- WICK:** The starting point, with a heading of 3000° and a track of 300° TCH 53.
- JENED:** A point on the path, with a distance of 6.2 NM from WICK and a distance of 2.8 NM to the next point.
- JOON:** A point on the path, with a distance of 1.8 NM from JENED and a distance of 1 NM to the next point.
- RW12:** A runway located 1 NM from JOON.
- Distances:** The total distance from WICK to CHOWA is 11.0 NM, with segments of 6.2 NM, 2.8 NM, 1.8 NM, and 1 NM.
- Navigation Aids:** The path includes a VOR/DME station (WICK) and a VORTAC station (CHOWA).
- Chart Symbols:** The chart includes symbols for a VOR/DME station (WICK) and a VORTAC station (CHOWA).

CATEGORY	A	B	C	D
LPV DA		405- $\frac{3}{4}$	250 (300- $\frac{3}{4}$)	
LNAV/VNAV DA		434- $\frac{7}{8}$	279 (300- $\frac{7}{8}$)	
LNAV MDA		520-1	365 (400-1)	