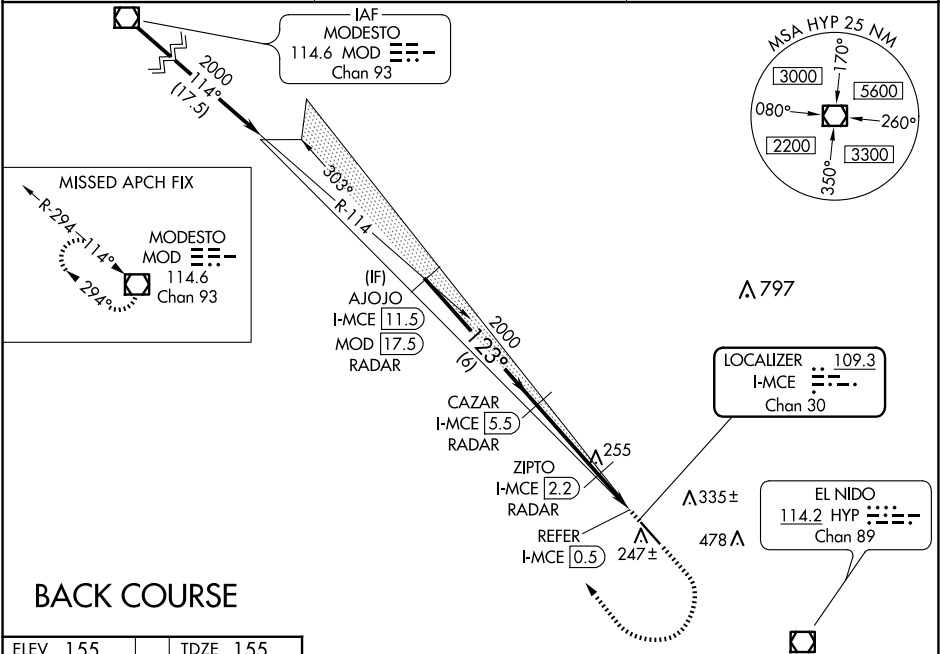


LOC/DME F-MCE <b>109.3</b> Chan <b>30</b>	APP CRS <b>123°</b>	Rwy Idg TDZE <b>155</b> Apt Elev <b>155</b>
---	------------------------	---

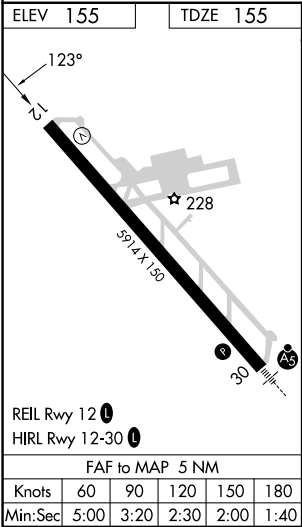
LOC BC RWY 12  
MERCED YOSEMITE RGNL (MCE)

DME or RADAR required. Rwy 12 helicopter visibility reduction below ¾ SM NA. Circling NA northeast of Rwy 12-30.	MISSED APPROACH: Climb to 1000 then climbing right turn to 3000 direct MOD VOR/DME and hold.
--	--

ASOS <b>132.175</b>	NORCAL APP CON <b>120.95 269.45</b>	UNICOM <b>122.7 (CTAF) 0</b>
------------------------	--	---------------------------------



BACK COURSE



	AJOJO I-MCE 11.5 RADAR	CAZAR I-MCE 5.5 RADAR	ZIPTO I-MCE 2.2 RADAR	1000 3000 MOD
	2000	2000	640	I-MCE 0.9 REFER I-MCE 0.5
	Disregard glide slope indications. 3.00° TCH 53			
	6 NM	3.3 NM	1.3 NM	0.4 NM 0.6 NM
CATEGORY	A	B	C	D
S-12	640-1	485 (500-1)	640-1 ⅓	485 (500-1 ⅓)
CIRCLING	640-1	485 (500-1)	640-1 ½	720-2
			485 (500-1 ½)	565 (600-2)
	ZIPTO FIX MINIMUMS			
S-12	520-1	NA		
	365 (400-1)			
CIRCLING	560-1	620-1	620-1 ½	720-2
	405 (500-1)	465 (500-1)	465 (500-1 ½)	565 (600-2)