

WAAS CH 87014 W32A	APP CRS 321°	Rwy Idg 6007 TDZE 63 Apt Elev 64
--	------------------------	---

RNAV (GPS) RWY 32

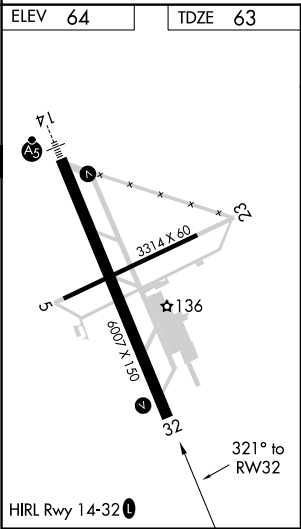
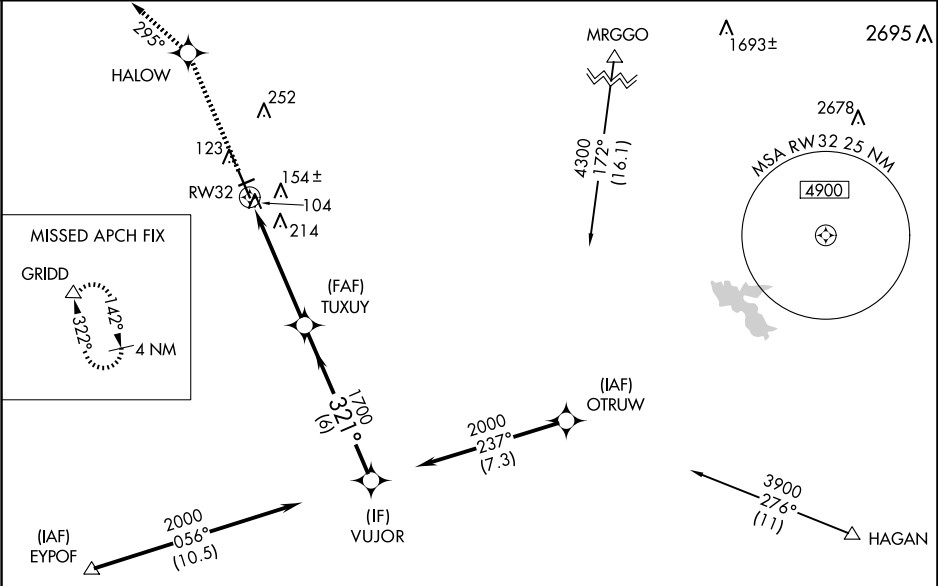
YUBA COUNTY (MYV)

⚠

For uncompensated Baro-VNAV systems, LNAV/VNAV NA below -15°C (5°F) or above 54°C (130°F). DME/DME RNP-0.3 NA. When local altimeter setting not received, use Lincoln altimeter setting and increase LPV DA to 357 feet, LNAV/VNAV DA to 418 feet and all MDA 60 feet; increase LPV and LNAV/VNAV all Cats visibility 1⁄8 mile, LNAV Cats C/D visibility 1⁄4 mile. Night landing: Rwy 5, 23 NA. Baro-VNAV and VDP NA when using Lincoln altimeter setting.

MISSED APPROACH: Climb to 4000 direct HALOW and via track 295° to GRIDD and hold.

ASOS 118.475	NORCAL APP CON 125.4 259.1	UNICOM 123.05 (CTAF)
------------------------	--------------------------------------	--------------------------------



4000	HALOW	tr 295°	GRIDD	*LNAV only	VUJOR	Procedure Turn NA
					2000	
					1700	
						GP 3.00° TCH 32
CATEGORY	A	B	C	D		
LPV DA	313-7⁄8 250 (300-7⁄8)					
LNAV/VNAV DA	374-1 311 (400-1)					
LNAV MDA	480-1 417 (500-1)		480-1 417 (500-1)			
CIRCLING	540-1 476 (500-1)		540-1 476 (500-1)		620-2 556 (600-2)	

SW-2, 10 JUL 2025 to 07 AUG 2025