

WAAS CH <b>42814</b> <b>W14A</b>	APP CRS <b>141°</b>	Rwy Idg <b>6007</b> TDZE <b>64</b> Apt Elev <b>64</b>
--	------------------------	---

RNAV (GPS) RWY 14  
YUBA COUNTY (MYV)

**V** For uncompensated Baro-VNAV systems, LNAV/VNAV NA below -15°C (5°F) or above 54°C (130°F). DME/DME RNP-0.3 NA. Helicopter visibility reduction below ¾ SM NA.

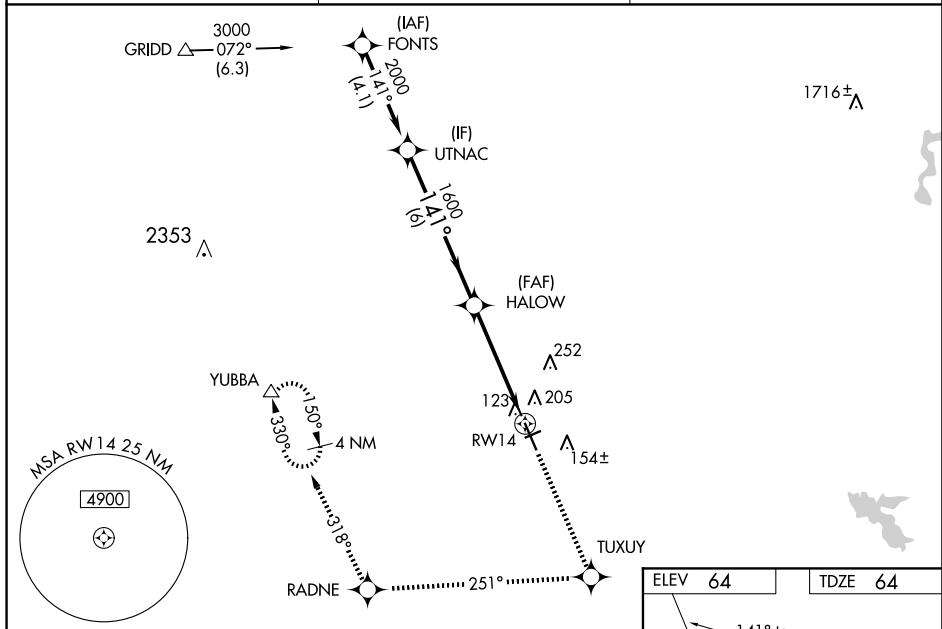
**A** Baro-VNAV and VDP NA when using Lincoln altimeter setting. When local altimeter setting not received, use Lincoln altimeter setting and increase LPV DA to 308 feet, LNAV/VNAV DA to 514 feet and all MDA 60 feet; increase LNAV/VNAV all Cats visibility ½ mile, LNAV Cats C/D visibility ½ mile. Inop table does not apply to LPV all Cats. For inop MALSR increase LNAV Cats A/B visibility ¼ mile. Night landing: Rwy 5, 23 NA.

MALSR



**MISSED APPROACH:**  
Climb to 4000 direct  
TUXUY and via track  
251° to RADNE and  
via track 318° to  
YUBBA and hold.

ASOS <b>118.475</b>	NORCAL APP CON <b>125.4 259.1</b>	UNICOM <b>123.05 (CTAF) 0</b>
------------------------	--------------------------------------	----------------------------------



UTNAC		4000 ↑		TUXUY ✱		tr 251°		RADNE ✱		tr 318°		YUBBA △	
2000		* LNAV only.											
Procedure Turn NA													
GP 3.00°													
TCH 51													
CATEGORY		A		B		C		D					
LPV DA		264- <sup>3</sup> / <sub>4</sub> 200 (200- <sup>3</sup> / <sub>4</sub> )											
LNAV/ VNAV DA		470- <sup>7</sup> / <sub>8</sub> 406 (500- <sup>7</sup> / <sub>8</sub> )											
LNAV MDA		500- <sup>3</sup> / <sub>4</sub> 436 (500- <sup>3</sup> / <sub>4</sub> )											
CIRCLING		540-1 476 (500-1)				540-1 <sup>1</sup> / <sub>2</sub> 476 (500-1 <sup>1</sup> / <sub>2</sub> )				620-2 556 (600-2)			