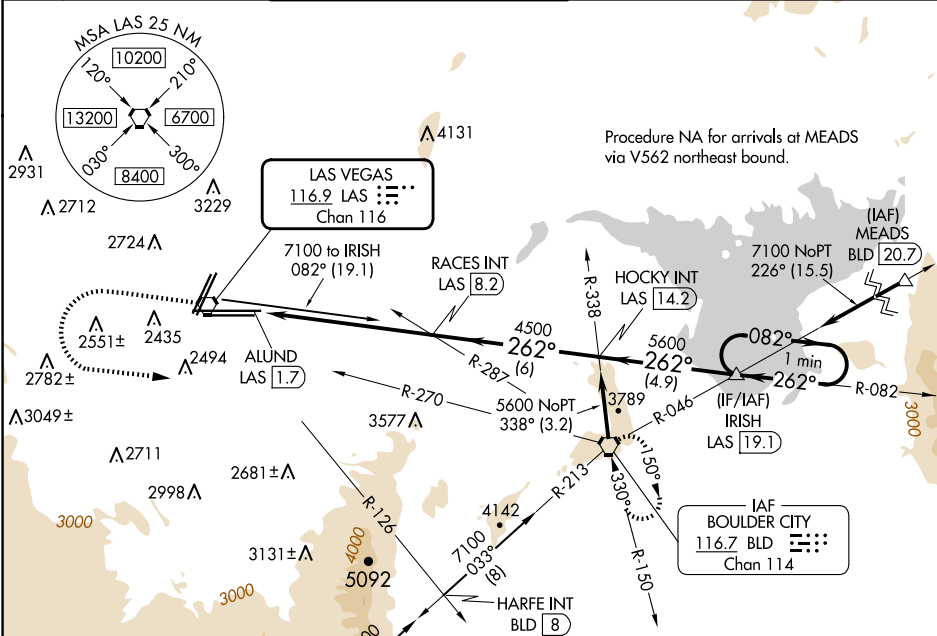


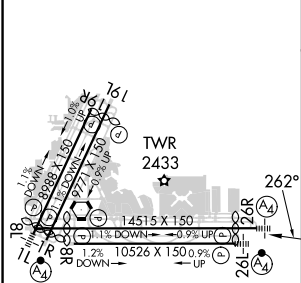
VORTAC LAS 116.9 Chan 116	APP CRS 262°	Rwy Idg	26L	26R
		TDZE	10526	12638
		Apt Elev	2069	2067
			2181	2181

VOR RWY 26L/R
HARRY REID INTL (LAS)

	For inop ALS, increase S-26L and S-26R Cat D visibility 1/4 SM.		MALSF Rwy 26L	MALS Rwy 26R	MISSED APPROACH: Climb to 4000 then climbing left turn to 6000 on heading 074° and BLD R-270 to BLD VORTAC and hold.	
	D-ATIS 132.4	LAS VEGAS APP CON 125.025 379.15 (West) 119.775 282.2 (East)	LAS VEGAS TOWER 118.75 257.8 (Rwy 1L/19R, 1R/19L) 119.9 257.8 (Rwy 8L/26R, 8R/26L)	GND CON 121.1 270.8 E of 1R/19L 121.9 254.3 W of 1L/19R	CLNC DEL 118.0	CPDLC



ELEV 2181	TDZE 26L 2069
	TDZE 26R 2067



	CIRCLING		One Minute Holding Pattern	
	3020-1 1/4	3060-1 1/4	3100-2 3/4	3540-3
		839 (900-1 1/4)	879 (900-1 1/4)	919 (1000-2 3/4)
		1359 (1400-3)		

SW-4, 10 JUL 2025 to 07 AUG 2025

SW-4, 10 JUL 2025 to 07 AUG 2025