
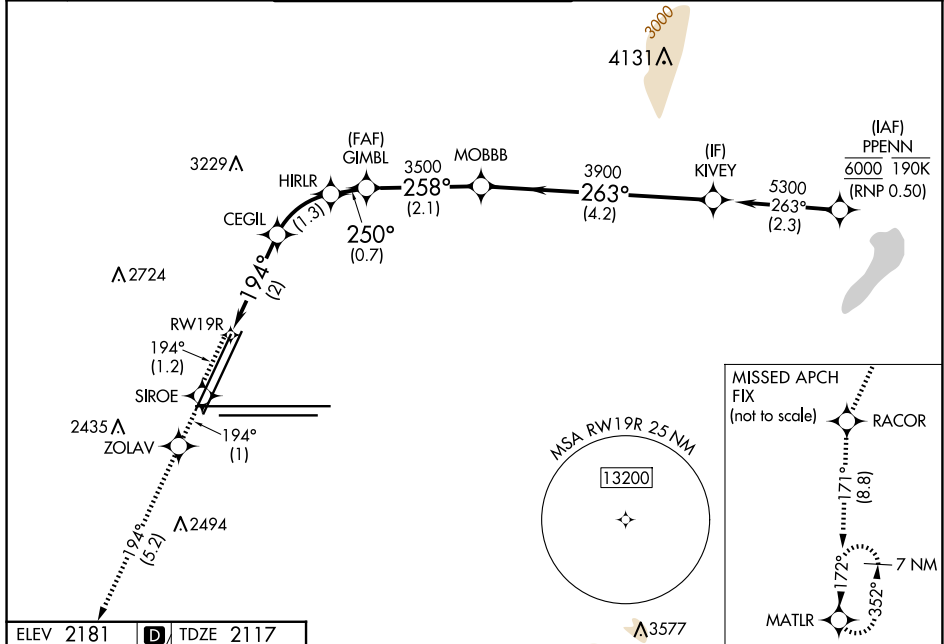


25051

RNAV (RNP) Z RWY 19R  
HARRY REID INTL (LAS)

<p>RNP AR APCH - GPS, RF, min RNP 0.50. Authorization required. Missed approach requires RNP &lt; 1.00.</p>	<p>MISSED APPROACH: Climb to 7000 on the RNAV missed approach route to MATLR and hold, continue climb-in-hold to 7000.</p>
<p> For uncompensated Baro-VNAV systems, procedure NA below 0°C or above 54°C.</p>	<p>*Missed approach requires minimum climb of 273 feet per NM to 2940. #Missed approach requires minimum climb of 235 feet per NM to 2960.</p>

D-ATIS	LAS VEGAS APP CON		LAS VEGAS TOWER		GND CON		CLNC DEL	CPDLC
132.4	125.025	379.15 (West)	118.75	257.8 (Rwy 1L/19R, 1R/19L)	121.1	270.8 E of 1R/19L		
	119.775	282.2 (East)	119.9	257.8 (Rwy 8L/26R, 8R/26L)	121.9	254.3 W of 1L/19R	118.0	

[illegible]

36°05'N-115°09'W HARRY REID INTL (LAS)  
RNAV (RNP) Z RWY 19R