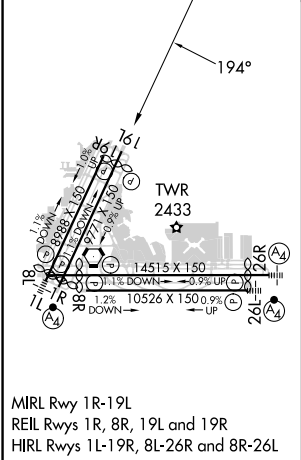
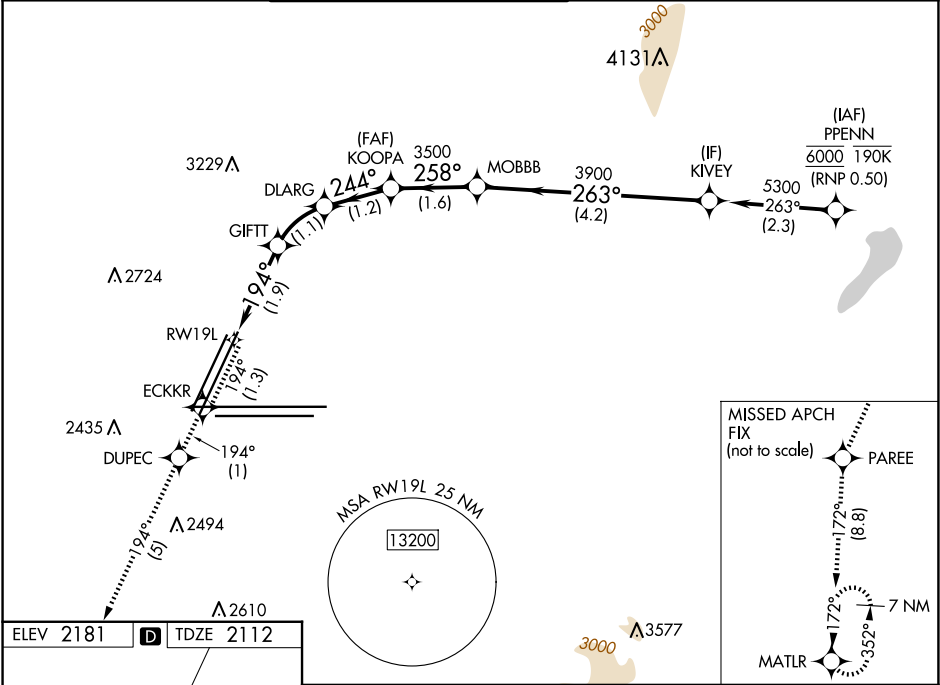


APP CRS	Rwy Idg	8808
194°	TDZE	2112
	Apt Elev	2181

RNAV (RNP) Z RWY 19L  
HARRY REID INTL (LAS)

RNP AR APCH-GPS, RF, min RNP 0.50. Authorization required. Missed approach requires RNP <1.00.	MISSED APPROACH: Climb to 7000 on the RNAV missed approach route to MATLR and hold, continue climb-in-hold to 7000. *Missed approach requires minimum climb of 208 feet per NM to 4880.
---	--

D-ATIS	LAS VEGAS APP CON	LAS VEGAS TOWER	GND CON	CLNC DEL	CPDLC
132.4	125.025 379.15 (West) 119.775 282.2 (East)	118.75 257.8 (Rwy 1L/19R, 1R/19L) 119.9 257.8 (Rwy 8L/26R, 8R/26L)	121.1 270.8 E of 1R/19L 121.9 254.3 W of 1L/19R	118.0	



7000	ECKKR	DUPEC	PAREE	MATLR
tr 194°	tr 194°	tr 194°	tr 172°	
	DLARG	KOOPA	MOBBB	KIVEY
	3107	3500	3900	5300
	2748	244°	258°	263°
	1.9 NM	1.1 NM	1.2 NM	1.6 NM
	4.2 NM			
CATEGORY	A	B	C	D
RNP 0.10 DA*	2471-1 359 (300-1)			
RNP 0.30 DA	2559-1 3/8 447 (400-1 3/8)			
AUTHORIZATION REQUIRED				

SW-4, 10 JUL 2025 to 07 AUG 2025

SW-4, 10 JUL 2025 to 07 AUG 2025