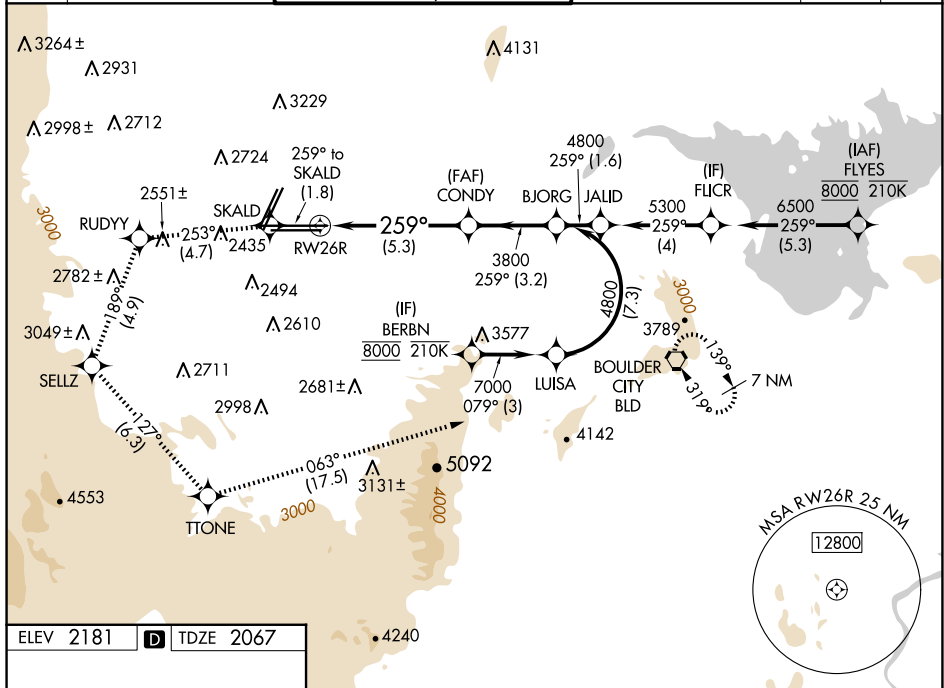


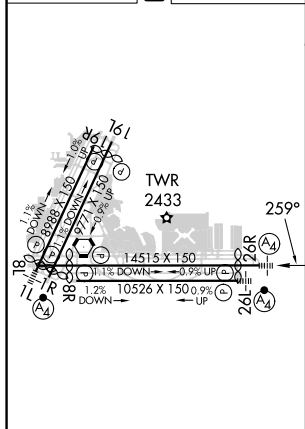
25051

RNAV (RNP) RWY 26R
HARRY REID INTL (LAS)

RNP AR APCH-GPS. V For uncompensated Baro-VNAV systems, procedure NA below -1°C or above 54°C.		MALS 	MISSED APPROACH: Climb to 7000 on the RNAV missed approach route to BLD VORTAC and hold. *Missed approach requires minimum climb of 230 feet per NM to 3200.				
D-ATIS 132.4	LAS VEGAS APP CON 125.05 379.15 (West) 119.775 282.2 (East)	LAS VEGAS TOWER 118.75 257.8 (Rwy 1L/19R, 1R/19L) 119.9 257.8 (Rwy 8L/26R, 8R/26L)		GND CON 121.1 270.8 E of 1R/19L 121.9 254.3 W of 1L/19R		CLNC DEL 118.0	CPDLC



ELEV 2181	D	TDZE 2067
-----------	----------	-----------



7000 ↑ tr 259°	SKALD ✦	tr 253°	RUDYY ✦	tr 189°	SELZ ✦	tr 127°	TTONE ✦	tr 063°	BLJRG ✦
VGSJ and RNAV glidepath not coincident (VGSJ Angle 3.00/TCH 84). See planview for multiple IF locations.									BJRG CONDY 3800 259° 3800 4800 GP 3.00° TCH 60
RW26R		5.3 NM		3.2 NM					
CATEGORY	A		B		C		D		
RNP 0.30 DA*	2457-7/8 390 (300-7/8)								
RNP 0.30 DA	2508-1 441 (400-1)								
<h1 style="text-align: center;">AUTHORIZATION REQUIRED</h1>									

HARRY REID INTL (LAS)
RNAV (RNP) RWY 26R