

LAS VEGAS, NEVADA

AL-662 (FAA)

25051

APP CRS	Rwy Idg	10526
259°	TDZE	2069
	Apt Elev	2181

RNAV (RNP) RWY 26L
HARRY REID INTL (LAS)

RNP AR APCH.

T For uncompensated Baro-VNAV systems, procedure NA below 0°C or above 54°C.

MALSF



MISSED APPROACH: Climb to 7000 on the RNAV missed approach route to BLD VORTAC and hold.
***Missed approach requires minimum climb of 255 feet per NM to 3200.**

D-ATIS
132.4

LAS VEGAS APP CON
125.025 379.15 (West)
119.775 282.2 (East)

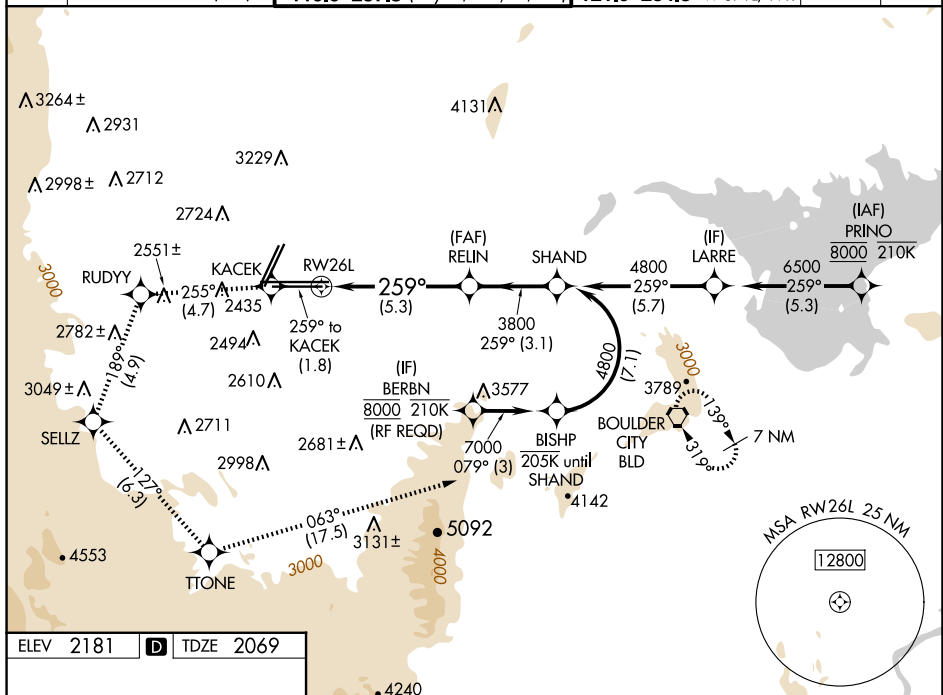
LAS VEGAS TOWER
257.8 (Rwy 1L/19R, 1R/19L)
257.8 (Rwy 8L/26R, 8R/26L)

GND CON

121.1	270.8	E of 1R/19L
121.9	254.3	W of 1L/19R

CLNC DEI
118.0

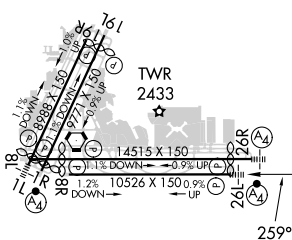
CPDLC



ELEV	2181	D	TDZE	2069
------	------	----------	------	------

D

TDZE 2069



MIRL Rwy 1R-19L
REIL Rwy 1R, 8R, 19L and 19R
HIRL Rwy 1L-19R, 8L-26R and 8R-26L

7000 ↑ tr 259°	KACEK ✧	tr 255°	RUDYY ✧	tr 189°	SELLZ ✧	tr 127°	TTONE ✧	tr 063°	BLD ◻
----------------------	------------	---------	------------	---------	------------	---------	------------	---------	----------

VGSI and RNAV glidepath not coincident
(VGSI Angle 3.00/TCH 84).

See planview for multiple IF locations.

CATEGORY	A	B	C	D
RNP 0.30 DA*	2450-7/8 381 (300-7/8)			
RNP 0.30 DA	2502-1 433 (400-1)			

AUTHORIZATION REQUIRED

AUTHORIZATION REQUIRED

LAS VEGAS, NEVADA

Orig 25FEB21

36°05'N-115°09'W

HARRY REID INTL (LAS)

RNAV (RNP) RWY 26L

SW-4, 10 JUL 2025 to 07 AUG 2025

SW-4, 10 JUL 2025 to 07 AUG 2025