


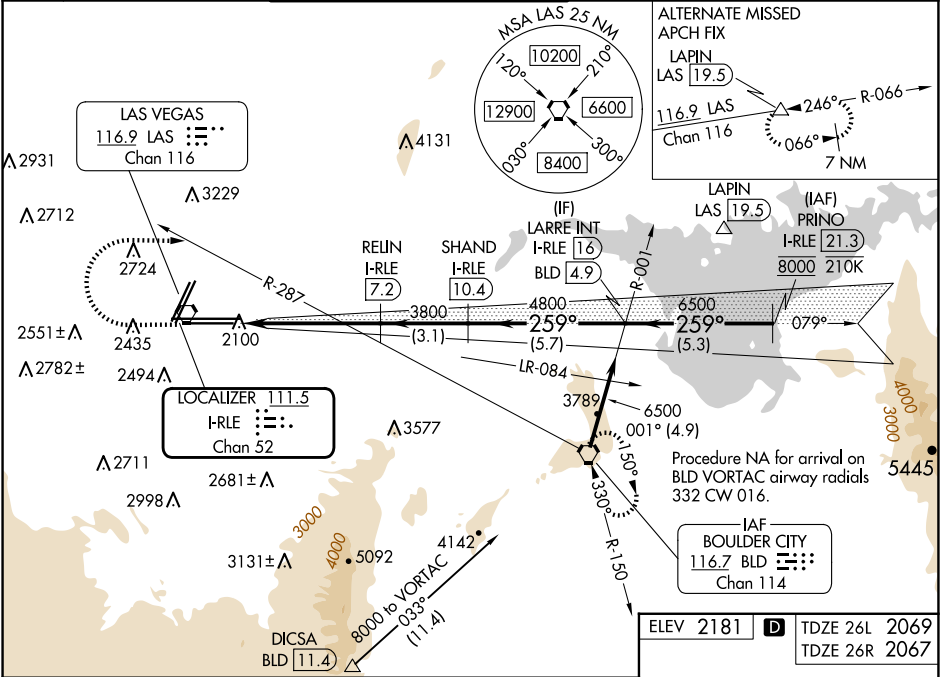


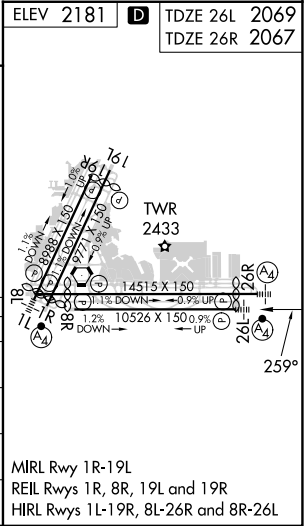
LOC/DME I-RLE <b><u>111.5</u></b> Chan <b>52</b>	APP CRS <b>259°</b>		26L	26R
		Rwy Idg	<b>10526</b>	<b>12638</b>
		TDZE	<b>2069</b>	<b>2067</b>
		Apt Elev	<b>2181</b>	<b>2181</b>

ILS Z or LOC Z RWY 26L  
HARRY REID INTL (LAS)

DME required.		MALSF Rwy 26L 	MALS Rwy 26R 	MISSED APPROACH: Climb to 3200 then climbing right turn to 6000 heading 080° and on BLD R-287 to BLD VORTAC and hold, continue climb-in-hold to 6000.			
	Inop table does not apply to S-ILS 26L and Sidestep 26R. For inop ALS, increase S-LOC 26L Cat C/D/E visibility to 1 3/8 SM.						
D-ATIS 132.4	LAS VEGAS APP CON 125.025 379.15 (West) 119.775 282.2 (East)	LAS VEGAS TOWER 118.75 257.8 (Rwy 1L/19R, 1R/19L) 119.9 257.8 (Rwy 8L/26R, 8R/26L)		GND CON 121.1 270.8 E of 1R/19L 121.9 254.3 W of 1L/19R		CINC DEL 118.0	CPDLC



	VGSI and ILS glidepath not coincident (VGSI Angle 3.00/TCH 84).				
	3200	6000	BLD R-287	PRINO I-RLE 21.3	
CATEGORY	A	B	C	D	E
S-ILS 26L	2269-3/4 200 (100-3/4)				
S-LOC 26L	2520-3/4	451 (400-3/4)	2520-1 451 (400-1)		
SIDESTEP 26R	2560-1	493 (400-1)	2560-1 1/2 493 (400-1 1/2)	2560-2 493 (400-2)	
CIRCLING	3020-1 1/4 839 (900-1 1/4)	3060-1 1/4 879 (900-1 1/4)	3100-2 3/4 919 (1000-2 3/4)	3540-3 1359 (1400-3)	



SW-4, 10 JUL 2025 to 07 AUG 2025

SW-4, 10 JUL 2025 to 07 AUG 2025